

**Center for International Trade and Transportation (CITT)  
College of Professional and Continuing Education (CPaCE)**



**Annual Report Academic Year 2022-2023**

**Table of Contents**

Mission .....	3
Consortia & Partnerships.....	4
Education and Training.....	9
CITT Self-Support And Contract-Based Training Programs .....	9
PSR-Supported Programs .....	10
NCST-Supported Programs .....	11
CSUTC-Supported Programs .....	11
Other Grant-Funded Education, Training Programs and Research .....	14
Outreach.....	16
Signature Events .....	16
Citt Communications .....	16
Multimedia Products Developed by CITT .....	18
Social Media .....	18
Sponsorships .....	18
Presentations/Seminars/Workshops Presented by CITT .....	18
CITT Staff.....	20
CSULB Students On CITT Payroll As Fellow, Assistant, or Intern .....	20
CITT Policy & Steering Committee Members.....	21
Policy And Steering Committee Members .....	21
Other Center Milestones .....	23
Current Professional Service and Organizational Affiliations for Dr. Thomas O’Brien .....	23
Current Professional Service and Organizational Affiliations for Dr. Tyler Reeb.....	24
Student Awards & Recognition .....	24
Faculty Members Involved in CITT Research, Scholarly, and Creative Activities .....	25
Extent of Participation by Industry and Non-Governmental Organizations .....	26
Extent of Student and Faculty Participation from Other California State or Other Universities .....	26
Research Consistency with Academic Standards and Legal Conformity.....	27
Sources and Amounts of CITT Income .....	27
Grants, Endowments, Contracts and Donations .....	27
Space Description and Amount Occupied.....	28
Acquisition of Equipment or Tangible Assets Valued Over \$5,000 .....	28
Minutes Of Citt Policy & Steering Committee Meetings.....	29

**CITT Annual Report 2022-2023**

The Center for International Trade and Transportation (CITT) Annual Report highlights the Center's major accomplishments of this past year. CITT is a national leader in supply chain and logistics education and transportation workforce development.

## MISSION

Over the last twenty-six years, CITT has made an ongoing effort to actively: 1) conduct innovative research within the field of trade and transportation; 2) develop its educational and training programs in partnership with industry and community stakeholders; and 3) connect stakeholders in industry, academia, and government. Since its founding in 1997 by Marianne Venieris at California State University, Long Beach, the Center has operated as a resource for the goods movement industry, researchers and education providers.

CITT contributes specialized research in the areas of policy analysis, workforce development, and labor market analysis. The research informs the development of its training and education programs for audiences that range from middle school students through late career professionals. Since the creation of the Global Logistics Professional (GLP) program in 1997, CITT has continued to build its reputation as a respected and forward-looking education developer and service provider.

As a key nexus of industry, academia, and government, CITT is also uniquely positioned to provide an ongoing and neutral forum where all stakeholders can come together to present alternative solutions to complex problems, seek opportunities around those solutions, and share expertise and resources. Our outreach programs include educational forums, publications that translate dense research for non-expert audiences, and multimedia efforts that keep the community connected and engaged. The Center has continued to lead outreach efforts within the regional trade and transportation community through its annual Town Hall meetings, which are designed to provide a forum for stakeholders to present their perspectives on current issues and developments impacting the industry.

CITT is dedicated to connecting and empowering the trade and transportation workforce by providing:

1. Education and training for today's realities and tomorrow's opportunities
2. Research and policy insights across the global supply chain
3. Leadership in the classroom, community, and the workplace

### **Education and Training for Today's Realities and Tomorrow's Opportunities**

The Center contributes to the development of a well-informed cross-sectoral and multidisciplinary community of industry professionals, governmental, and community leaders through:

- Education and Training Programs - a suite of training solutions designed to provide incumbent and emerging professionals with essential industry-recognized knowledge, skills, and abilities
- Customized contract training - educational programs designed to address organizational development and capacity needs for public and private organizations
- Scalable community education seminar programs--targeted outreach programs to promote knowledge transfer about critical supply chain logistics issues for industry, community, and governmental stakeholders
- K-12 programs to create pathways to opportunity

### **Research and Policy Insights across the Global Supply Chain**

The Center conducts unbiased applied research that contributes to the knowledge base of goods movement, leading to an informed analysis of:

- Workforce Development--Career Pathway Development for critical occupations in the trade and transportation sector
- Labor Market Analysis--identifying skills gaps and mapping new competencies required to empower the new mobility workforce
- Policy Analysis--studying the impact of legislation and regulations across the supply chain
- Applied Research--Developing real-world test beds and pilot programs to test new initiatives

### **Leadership in the Classroom, Community, and the Workplace**

The Center disseminates globally significant research findings and information by serving as an evidence-based community and industry resource and providing:

- Organizational leadership as subject matter experts in various venues
- Civic Markets - Bringing Together Leaders in Industry, Education, and Government to develop common calls to action
- Signature Events: Annual Town Hall, Conferences, Seminars
- Multimedia offerings: Video, Webinars, Podcasts
- Scholarships and Awards to students

## **CONSORTIA & PARTNERSHIPS**

CITT is also the California State University, Long Beach home to four transportation research centers. Each is a multi-university partnership addressing different transportation-related challenges and aiming to conduct unbiased research that contributes to the knowledge base surrounding transport systems including goods movement. Much of CITT's collaborative work centers around a 26-year partnership with the University of Southern California known as the METTRANS Transportation Consortium. Further descriptions of each research center follow.

1. The Pacific Southwest Region 9 University Transportation Center, a University Transportation Center designated by the U.S. Department of Transportation and led by the University of Southern California;
2. National Center for Sustainable Transportation (NCST), a consortium of seven institutions led by the University of California, Davis;
3. National Network for Transportation Workforce (NNTW), a collaboration of four regional workforce research centers including the Southwest Transportation Workforce Center which is housed at CITT and which was one of five regional transportation workforce established in 2014;
4. CSU Transportation Consortium, a collaboration of four universities led by San Jose State University which administers a statewide research program using California Senate Bill (SB) 1 funds.

### **Pacific Southwest Region (PSR) UTC**

The 2021 Bipartisan Infrastructure Law (BIL) provides the U.S. Department of Transportation (DOT) with a total funding of \$450 million to continue its University Transportation Center (UTC) program for

the 5-year period from 2022 through 2026. The USDOT received 230 applications for the University Transportation Center (UTC) program, with each of the 34 lead universities receiving tiered funding to help support research, workforce development, technology transfer and innovation.

In the spring of 2023, the Pacific Southwest Region University Transportation Center (PSR UTC), led by USC, was awarded a renewal five year grant as part of the UTC competition for regional centers. PSR is the Region 9 UTC, serving the needs of Arizona, California, Hawaii, Nevada, American Samoa, Commonwealth of the Northern Mariana Islands, and Guam. It has been led by the University of Southern California (USC) since 2016 and includes eight additional partner universities:

- California State University, Long Beach
- University of California, Davis
- University of California, Irvine
- University of California, Los Angeles
- University of California, Berkeley
- University of Hawaii at Manoa
- Northern Arizona University
- Pima Community College in Tucson, AZ

The goal of the Pacific Southwest Region UTC is to address regional needs and to generate and share knowledge throughout the region. The center's primary focus is to improve the mobility of people and goods. The center focuses on the following research themes:

- i) Technology to address transportation problems and improve mobility;
- ii) Improving mobility for vulnerable populations;
- iii) Improving resilience and protecting the environment; and
- iv) Managing mobility in high growth areas.

CITT Executive Director Thomas O'Brien serves on the PSR Executive Committee.

### **National Center for Sustainable Transportation (NCST)**

NCST is a United States Department of Transportation (USDOT)-funded national University Transportation Center (UTC) with these participating research institutions:

- California State University, Long Beach
- Georgia Institute of Technology
- Texas Southern University
- University of California, Riverside
- University of Southern California
- University of Vermont

The Institute of Transportation Studies at the University of California, Davis, leads the NCST. CITT coordinates research and training for NCST in the area of sustainable freight systems and workforce development. CITT Executive Director Thomas O'Brien serves on the NCST Executive Committee. In February 2023 as part of the UTC national center competition, the UC Davis Institute of Transportation Studies received \$20 million over five years to continue its leadership of the NCST.

### **National Network for the Transportation Workforce (NNTW)**

NNTW is a collaborative of university-based research centers that seek to connect, empower, and advance the 21st century transportation workforce through targeted research, education, and industry engagement. Originally launched through funding by the Federal Highway Administration (FHWA), the NNTW team is dedicated to providing a more strategic and efficient approach to transportation workforce development. While the original grant has expired, the four centers below continue to coordinate activities as the National Network and are currently under contract to jointly support the USDOT Volpe Center in developing materials for its Intelligent Transportation System (ITS) Professional Capacity Building (PCB) program.

- Southwest Transportation Workforce Center (SWTWC), California State University, Long Beach
- Western Region Transportation Workforce Center (WRTWC), Montana State University
- Northeast Transportation Workforce Center (NETWC), University of Vermont in Burlington
- Southeast Transportation Workforce Center (SETWC), University of Memphis, Tennessee

### **California State University Transportation Consortium (CSUTC)**

The California State University Transportation Consortium (CSUTC), which is led by the Mineta Transportation Institute at San Jose State University, fosters synergies across the entire California State University system to conduct impactful transportation research and engage in workforce development initiatives that increase mobility of people and goods and strengthen California's economy. California's Senate Bill (SB) 1 funds the CSUTC.

CSUTC unifies and focuses the efforts of four outstanding CSU campuses that represent and support the geographical, cultural, racial, and socioeconomic diversity that makes California, and the CSU system, strong. At CSULB, the CSUTC program is administered by both CITT and the College of Engineering. In addition to SJSU and CSULB, CSUTC partners include

- CSU Chico
- CSU Fresno

### **California Local Technical Assistance Program (LTAP)**

In October of 2021, CITT became the new administrative home for California's Local Technical Assistance Program (LTAP *or* CALTAP) Center after being awarded a three-year contract from Caltrans. Funded through partnerships between the Federal Highway Administration ([FHWA](#)) and state departments of transportation (DOTs), this national program assists local, rural, and tribal transportation agencies by offering low-to-no-cost access to high-demand workforce training, technical assistance, and other knowledge transfer services. CITT also works with the CSULB College of Engineering in curriculum design for the LTAP.

With over 51 centers across the U.S. and Puerto Rico forming a state-based regional network, LTAP has established a comprehensive national framework of local public agency (LPA) support. In California, the audience for LTAP services consists of the State's 600+ LPAs, which includes 58 counties (482 municipalities) comprised of cities, regional transportation planning agencies (RTPAs), metropolitan planning organizations (MPOs), towns, special districts, and tribal communities. California's Department of Transportation ([Caltrans](#)) organizes all of these LPAs geographically into 12 "Districts" that cover the State's three regions: north, south, and central.

In its administration of California's Local Technical Assistance Program (LTAP) Center, CITT has remained focused on executing work plan objectives to expand program outreach and local public agency (LPA) engagement via new and existing communication channels, including the dissemination of curated

industry news and updates via social media and email-based direct subscriber campaigns, content and feature-set upgrades to our newly developed caltap.org website, and targeted presentations and webinars that are designed to broaden audience awareness.

*Grant Amount: \$870,000. Period of Performance: 10/1/2021 to 7/31/2024*

***Key LTAP activities during the reporting period include:***

*Western Region Conference & Tribal Peer Exchange*

California LTAP supports local public transportation agencies across the state by providing professional training, technical assistance, knowledge transfer, and worksite best practices and innovations that help them plan, manage, and maintain their roadway infrastructure. CITT's CALTAP team hosted this year's annual meeting of the western region of the National Local and Tribal Technical Assistance Program Association ([Western Regional NLTAPA](#)) meeting in April, bringing together local assistance partners and practitioners from neighboring state LTAPs, FHWA, and Caltrans. These regional meetings are an effective way for LTAP staff nationwide to celebrate successes, address common program challenges, and collaborate on approaches and strategies to better engage, support, and train local public agency clients. New to this year's meeting was the addition of a one-day tribal peer exchange designed to both celebrate and better understand the cultural differences and transportation needs of California's wide range of tribal communities.

The event also offered an opportunity for CITT/CALTAP to expand workforce partnerships with the Port of Long Beach, the California Workforce Association, and the Pacific Gateway Workforce Investment Network, all of whom participated in and contributed to the presentations and roundtable discussions.

*Intro to GIS for Local Public Agencies*

CALTAP developed and delivered a live online GIS training class that introduced basic concepts, tools, and applications needed to begin creating useful, informative, and data-rich online maps. Held August 3, 2023, this initial pilot provided an opportunity to upskill non-GIS transportation professionals by demonstrating how incorporating GIS concepts and applications into their work products could help them convey complex, map-based dataset relationships in a way that engages with a broader more non-technical audience, like agency leadership and the public. The course was designed and taught by CITT GIS and Data Manager Ben Olson.

*FHWA Build a Better Mousetrap*

“[Build a Better Mousetrap](#)” is an FHWA national recognition program designed to discover, spotlight, and celebrate locally relevant, innovative solutions to the everyday challenges local and tribal transportation professionals encounter maintaining their local roads. As California's program sponsor, CALTAP/CITT administered and facilitated a statewide competition in April/May to elicit innovative applications, identify local winners, and advance them onward to FHWA's national competition.

Of the three applications submitted in what is California's second year participating, FHWA selected the City of Walnut Creek—a city in Contra Costa County located in the East Bay region of the San Francisco Bay Region—as the Pioneer Award winner; one of four awards presented annually. On September 26, 2023, staff from CALTAP/CITT and Caltrans traveled to Walnut Creek to [officially present](#) Associate



Traffic Engineer Matt Redmond and his Public Works team with FHWA's Pioneer Innovation Award for devising an automated approach to capturing traffic signal sight distances known as "Safe Sightings of Signs & Signals" (SSOSS).

### *Fugitive Dust Mitigation*

CALTAP also hosted the first in a series of online training courses for its Sustainable Engineering Training Academy ([SETA](#)). The class, [Fugitive Dust Mitigation](#) was developed under a partnership by CSULB's Center for Energy & Environmental Engineering & Services ([CEERS](#)). SETA courses are specifically designed to help transportation and construction engineers, planners, and project managers identify and reduce the environmental impacts of construction projects and roadway development. Presented on September 14, 2023, Fugitive Dust Mitigation combined theory, application, and case study lectures from CEERS instructors and industry partners as a way of contextualizing particle disbursement and suspension modeling for workforce practitioners, as well as quantifying the health impacts, contributing factors, and approaches to mitigating dust generation during construction project activities (an EPA requirement).

### *Caltrans Tribal Support*

CSULB's Director of Research and Workforce Development Tyler Reeb coordinates all tribal-related activities for the CALTAP program including support of Caltrans' broader tribal priorities. CSULB's existing and prior workforce, training and research programs serve to connect the tribal communities to resources at the national level, supporting technology transfer goals and sharing information on innovations.

### **Caltrans Active Transportation Research Center (ATRC)**

CITT was funded as a sub-awardee to the University of California, Davis to support the ATRC. The ATRC exists to serve active transportation implementers throughout California and aims to leverage a variety of existing active transportation resources and efforts. ATRC draws from experts in the field to offer a repository of tools, training, resources and technical assistance to local agencies, Tribes, active transportation implementers and ATP applicants. The ATRC is funded by the Active Transportation Program (ATP) and managed by the California Department of Transportation (Caltrans). The ATRC utilizes a combination of subject matter experts from state agencies, universities, and consultants to provide active transportation resources that support the ATP. These services focus on both infrastructure and non-infrastructure ATP project types. The audience of the ATRC is primarily those that are eligible for ATP projects, but also those who are implementing or applying for active transportation projects in California. This includes Local, Regional or State Agencies, Caltrans, Transit Agencies, Natural Resources or Public Land Agencies (State or local park or forest agencies, State or local fish and game or wildlife agencies, Department of the Interior Land Management Agencies, U.S. Forest Service, Public Schools or School Districts), Tribal Governments, Private Nonprofit Organizations (Recreational Trails Program only), and any other entity with responsibility for oversight of transportation or recreational trails. CITT's principal role will be to extend the reach of ATRC programs through the CALTAP network and to coordinate outreach with tribal organizations. *Grant Amount: \$210,000. Period of Performance: 6/30/2023 to 21/31/2025.*



## EDUCATION AND TRAINING

CITT conducts extensive educational research and assists local K-12 student populations, professionals, and others in the Center’s workforce development programs to learn relevant, marketable skills.

Current efforts include the Port of Long Beach Academy of Global Logistics, , the NCST GIS workshop to introduce GIS into high schools, and projects like the Talent Pipeline Initiative supported by the CSUTC. Grants also fund several CITT programs including the Caltrans Freight Academies, and Southwest Workforce Transportation Workforce Center Education Initiatives.

## CITT SELF-SUPPORT AND CONTRACT-BASED TRAINING PROGRAMS

### **Global Logistics Professional (GLP) Designation Program**

This is an industry-designed program serving every sector of the goods movement industry in Southern California and globally. It is designed in a flexible format to meet the unique training needs of individuals at various stages of their careers. Courses can be taken individually or in the entire sequence in order to earn the GLP professional designation. Partnerships with local workforce development agencies ensure that this program reaches veterans and displaced workers and connects them to career opportunities in an exciting and vibrant industry that needs a diverse set of workforce skills. The GLP program is administered by the CPaCE Office of Professional and Workforce Development with support from CITT which administers student scholarships, assists with marketing and outreach and provides instruction through CITT Executive Director Tom O’Brien. FY 2022-23 marks the 25<sup>th</sup> anniversary of the GLP program.

*GLP and MTOP Classroom Enrollment\*, Academic Year 2021-2022*

- GLP: 18

*GLP Student Completion*

- Spring 2022 GLP – 18 students were awarded the GLP Professional Designation

\*Reflects enrollment in different modules for the same student. Only students completing all modules including a capstone project are awarded the Professional Designation and are included in student completion numbers.

### **Academy of Global Logistics (AGL)**

The Port of Long Beach Academy of Global Logistics offers a four-year academic curriculum at Long Beach Unified School District’s Juan Rodriguez Cabrillo High School that is integrated with real-world experiences through site visits and workshops presented by industry professionals. This program - a partnership between the Port of Long Beach (POLB), the Long Beach Unified School District, and CITT - features workshops and activities that incorporate concepts across disciplines such as mathematics, social sciences, and humanities, while developing cultural competencies for a global economy. Due to CITT’s expertise and position as a hub for transportation research, its role in the program is facilitating industry

coordination and in providing technical assistance to AGL faculty. CITT contributed to the development and support of the following AGL milestones and events in 2022-23:

- **Support for the AGL Advisory Board:** The AGL Advisory Board supports the mission of the Academy by providing feedback and input to help teachers collaborate across subject areas and develop relevant curriculum and work-based learning activities. Board Members also participate in career workshops and mentorship programs. CITT Executive Director O'Brien serves on the Board.
- **Curriculum Support:** As part of the support of the AGL program, CITT works with teachers to develop grade-appropriate curriculum for students. Through guided curriculum support, CITT helps the instructors develop integrated, grade-level projects that correspond to the course material they are learning. CITT also brokers connections with industry contacts to facilitate mentoring relationships with students and provides additional consulting on special topics. During the 2021-22 academic year, CITT led the development of a 12<sup>th</sup> grade capstone course for AGL that was launched in the spring of 2023. The capstone allows graduating seniors to work in teams over the course of an entire semester to solve the supply chain problems of a fictitious solar company. CITT worked with course instructors to develop the course objectives and the capstone case study. CITT also assembled an Industry Advisory Board to guide the development of the course and to work with instructors and students over the length of the semester. Students receive transfer credit for schools in both the UC and CSU systems.
- **Industry Coordination:** CITT coordinated AGL student visits to the CITT Town Hall, and the Intermodal Association of North America (IANA) Expo, all held in Long Beach.

## PSR-SUPPORTED PROGRAMS

### Community-Based Mobility Lab (research):

CITT Director of Research and Workforce Development Tyler Reeb, CSULB faculty member Gwen Shaffer, and instructor Hossein Jula were awarded funding from PSR for a project titled "Implementing a Community-Based Mobility Lab: Improving Traffic, Protecting Data Privacy," through the PSR.

The purpose of the Community-Based Mobility Lab is to address two interrelated research problems:

1. How to collect traffic/mobility data and use artificial intelligence techniques to develop Intelligent Transportation Systems (ITS) technologies to improve congestion and safety conditions at busy truck intersections; and
2. How to ensure that the data privacy rights of Long Beach residents and visitors (who pass through intersections of study) are protected and assured through community-based research and outreach practices that foster stakeholder trust.

This project's multidisciplinary research team will expand upon work conducted in a previously completed PSR project conducted by CSULB's Dr. Gwen Shaffer to simultaneously test and evaluate methods for ITS data gathering and related research methods to ensure data privacy. This research will be presented in a final report that identifies digital rights, institutional hurdles and multijurisdictional

challenges that must be addressed to promote community supported ITS deployments that preserve digital privacy in Long Beach and other communities in Los Angeles County. Members of the team at Caltrans have taken an interest in the project and offered assistance. During a kickoff meeting with participants from Caltrans, Caltrans agreed to provide access to important data tools (Replica and Streetlight). *Grant Amount: \$100,000. Period of Performance: 08/1/2023 to 7/31/2024*

### **Caltrans Succession Planning (research)**

CSULB is carrying out a Caltrans Succession Planning project. The purpose of this project is to conduct research on previous and current succession planning strategies undertaken by state Departments of Transportation (DOTs) and other organizations to be used by the California Department of Transportation (Caltrans) in developing and updating its own strategies for employee recruitment and retention. *Grant Amount: \$130,000. Period of Performance: 7/1/2023 to 6/30/2024.*

### **Transit ROI Assessment Model (research)**

The goal of this project is to develop a model for benchmarking return-on-investment (ROI) data for training, internship, mentorship, and apprenticeship programming through a survey and focused case studies of selected California transit agencies. Transit agencies spend considerably less on training than other organizations in the transportation and goods movement industry (about 0.1% of resources to training compared to the private sector's 4–6%). Yet, the Federal Transit Administration recommends that transit agencies contribute at least 3% of their wages and salary budget on training and professional development. This project will help agencies develop a means of justifying expenses incurred as a result of investments in employee training. The team at CITT began the background research for the project in June 2023. *Grant Amount: \$20,000. Period of Performance: 1/1/2023 to 12/31/2023.*

## NCST-SUPPORTED PROGRAMS

### **GIS Workshop, White Paper, and Summit**

After completion of a series of virtual high school GIS workshops, CSULB is planning a summit to convene high school teachers and students at partners from around the country to learn about GIS and introducing it in high school. CSULB is working with the University of Memphis Transportation STEM K-12 program to help with marketing and to advise on summit content development. The summit will feature three sessions:

- A teacher session with presentation on best practices for bringing GIS into high school instruction and opportunity for discussion of opportunities and barriers to entry;
- A concurrent student session on transportation and mobility with activities; and
- A combined teacher-student session that allows all participants to learn how to use basic GIS and create their own web product.

Participants will include NCST partner institutions and schools at the national level with immersive transportation programs.

## CSUTC-SUPPORTED PROGRAMS

California's Senate Bill 1 (SB-1), signed into law in April of 2017, is a comprehensive transportation funding package designed to address a wide range of transportation-related needs across California. As part of SB 1, annual appropriations of up to \$2 million are available to the CSU for the purpose of conducting transportation research and transportation-related workforce education, training and development. The Mineta Transportation Institute (MTI) at San José State University was selected to lead the California State University Transportation Consortium (CSUTC).

### **SB-1 Talent Pipeline (research)**

The objective of this project is to develop a guide that would help leaders at the California State University (CSU) campuses better understand the steps required to develop a talent pipeline for targeted occupations in trade and transportation. The blueprint walks the readers through each critical phase in developing a talent pipeline and provides recommendations for statewide CSU cross-campus partnerships to launch new talent pipelines as well as to develop non-degree certifications and non-credit professional development programs to help incumbent and displaced workers rapidly add skills to compete for in-demand trade and transportation occupations.

CSULB held a webinar on November 16, 2022 to convene industry, education, and government partners in the launch of a Talent Pipeline pilot program, as a "proof-of-concept" for this project (see below). The final report for the project was published in February 2023. An additional round of SB-1 funding led to the University-Industry Gateway project, essentially the second phase of the SB-1 Talent Pipeline project. The University-Industry Gateway oversaw the pilot program and will subsequently evaluate it later this year. *Grant Amount: \$22,500. Period of Performance: 1/1/2021 - 11/16/2022*

### **SB-1 University-Industry Gateway (research)**

CITT researchers have designed, implemented, and continuously evaluated a proof-of-concept pilot. Throughout this process, CITT researchers have conducted meetings with partners at Gannet Fleming, a global engineering firm, and faculty and staff at the College of Engineering and College of Professional and Continuing Education at CSULB to facilitate the Talent Pipeline program during the Spring 2023 semester and into the Fall 2023 Semester. Three students received paid summer internships at Gannet Fleming. CITT also facilitated a paid workshop with NASA's Jet Propulsion Laboratory. Participants took part in a pre- and post-workshop survey. Two students were selected for internships with JPL. Additionally, a survey was disseminated among CSULB faculty as well as industry and community stakeholders during this reporting period in order to gauge support and interest in the project and its direction in the future. A final assessment of the proof-of-concept pilot and the indications it provides for future research will take place in November and December 2023.

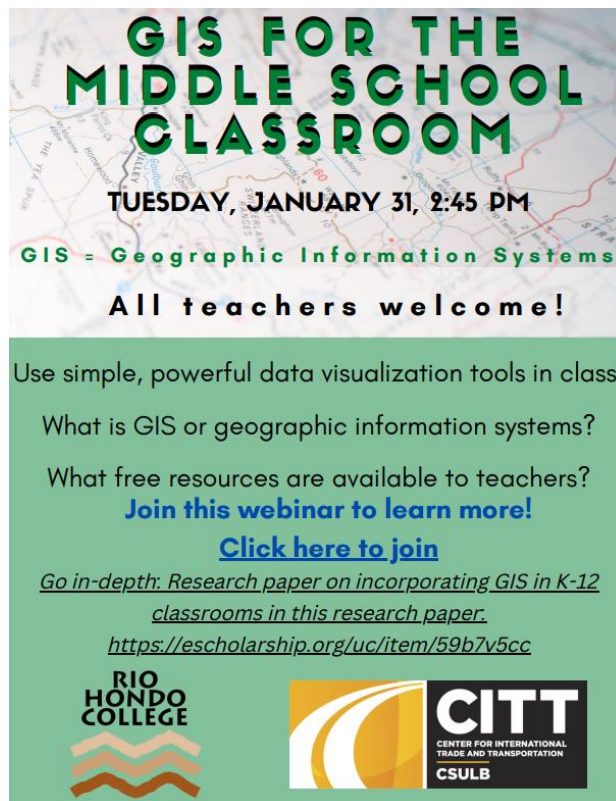
In order to publicize the Research & Development Gateway project, CITT researchers partnered with faculty and staff from the College of Professional and Continuing Education and the College of Natural Sciences and Mathematics to submit an article for publication in the UC Berkeley Center for Studies in Higher Education Research and Occasional Papers Series (ROPS). An extended abstract was provided to the UC Berkeley Center for Studies in Higher Education Research on April 23rd, the abstract was accepted on May 10th, and a draft was submitted on August 31st. The draft is currently under review. If accepted, the target publication date will take place December 2023 or January 2024. *Grant Amount: \$25,000. Period of Performance: 5/1/2023 to 4/30/2024.*

### **SB-1 Addressing Transportation Construction Workforce Needs Through Innovative Policies and Practices (research)**

At the beginning of 2023, CITT was awarded a grant through California’s Senate Bill 1 (SB-1) to conduct research on how to address the growing shortage of highway construction workers in both California and in the United States. This project is a response to a Research Needs Statement submitted by the American Road and Transportation Builders Association (ARTBA) to the California State University Transportation Consortium (CSUTC). The objective is to identify innovative approaches for the hiring and retention of workers in the transportation construction sector. By looking at other sectors that have faced similar challenges in the past, such as the healthcare sector, the project aims to document best practices in workforce recruitment and retention and develop a hiring and retention checklist for the industry with key milestones and resources. *Grant Amount: \$20,000. Period of Performance: 1/1/2023 to 12/31/2023.*

**SB-1 Equity in Learning Opportunities for Middle School Students: Connecting Communities and Transportation Through GIS (research)**

CSULB held a one-hour webinar with middle school teachers and administrators about bringing GIS to middle school curriculum. The participants, project P.I. Tom O’Brien, and project lead Ben Olson discussed observations from a SB-1-funded middle school GIS bootcamp held in summer 2022, barriers and benefits to bringing GIS to middle school classrooms, and potential creative ideas. The webinar was promoted through Mountain View School District and Rio Hondo College. There were five total participants including instructors and administrators from Mountain View School District. The webinar was held on January 31, 2023. The small participation allowed for a more in-depth discussion.



*Promotional flyer for the follow-up teacher webinar*

*Grant Amount: \$22,500. Period of Performance: 1/1/22 to 02/28/23*

## OTHER GRANT-FUNDED EDUCATION, TRAINING PROGRAMS AND RESEARCH

### California Energy Commission

**California Energy Commission Tribal Transit Zero Emission Vehicles Training Program:** CITT worked with the National Indian Justice Center (NIJC); Fasterhorse, LLC; and Bubar & Hall Consulting, LLC to develop a training program addressing transit needs and the transition to zero-emission vehicles in tribal nations in San Diego and Humboldt County, CA. The program began with a needs assessment targeting tribal participants to gather their input on the transit needs and impact of ZEV transit in their regions. The goal was to develop a suite of training pilots that could be developed and deployed with tribal participants based on the identified needs. However, due to the passing of Kelly Myers, Executive Director of the National Indian Justice Center (NIJC), members of the board of directors and the Myers family have elected to dissolve the center. The decision to dissolve NIJC means that the California Energy Commission (CEC) grant project, "Tribal Zero Emission Vehicles Training Program" was also discontinued. CITT was a lead sub-partner on the project. February 28, 2023 was the official end-date for the project. CSULB submitted a collection of work completed for the project that featured an innovative community readiness model for tribal engagement. That model was presented at a National Academies tribal workforce summit later in 2023. The community readiness model will be dedicated to the legacy of Kelly Myers. *Grant Amount: \$287,841. Period of Performance: 6/21/2022 to 02/28/2023*

### US DOT Volpe Center

**Intelligent Transportation Systems (ITS) Professional Capacity Building (PCB):** In Spring of 2021, the CITT's Southwest Transportation Workforce Center (SWTWC) was awarded a \$95K contract by Volpe to revise and expand its library of academic resources for college students and faculty, as part of its ITS Professional Capacity Building (ITS PCB) program. Overall, the goal of this program is to build a greater national awareness of and engage student interest in the field of ITS as a viable career option, as well as offer relevant professional development for current ITS professionals. The SWTWC team and its national partners completed development of classroom-ready "case studies" that will allow students to experience practical workplace problem-solving within the context of real-world ITS project deployments. To help enrich these lessons with a sense of career opportunity, each case study connects students to a series of profiles of actual ITS professionals reflecting on their own experience working on similar projects and the educational pathways that led them there. The workforce centers and Volpe are conducting beta-testing of the case studies and discussing deployment in 2023-24. CITT will further support the ITS PCB program by facilitating a workshop for current and future case study instructors. *Grant amount: \$195,000. Period of Performance: 1/1/2023 to 1/1/25.*

### California Air Resources Board (CARB)

**Workforce and Economic Impact Evaluation of Future Zero-Emission Requirements for Cargo Handling Equipment:** This study, led by CITT in conjunction with the CSULB Dept. of Economics, studied the impacts of the State's zero emissions freight mandates on the port and regional workforce. Impacts include a possible shift to automation as a means to compliance. A stand-alone white paper on the relationship between environmental policies and regulations and technology use in the port sector was submitted to CARB and the study's Advisory Board for review. Economic analysis findings were also submitted to CARB. *Grant Amount: \$240,000. Period of Performance: 5/1/2021 to 12/31/22*



## **Intermodal Association of North America (IANA)**

The Intermodal Association of North America (IANA) provides support to colleges and universities across the country for student scholarships. At CSULB, the scholarships allow students to take classes in the Global Logistics or Marine Terminal Operators Professional Program and to conduct applied research on topics related to the intermodal industry. This research results in the development of White Papers shared via the IANA network. This year's IANA scholars were Maria Casares (M.B.A.) and Patrick Schiwiek (M.A., International Affairs), who received research awards in the amount of \$1,825 each for the fall 2022 semester.

Patrick Schiwiek, "How Can the Concept of Gamification be Used to Address the Shortage of Truck Drivers in the United States?"

- This project investigated the shortage of truck drivers in the United States and its causes. Its primary focus was to explore gamification and its potential uses in alleviating the truck driver shortage, featuring a case study on a trucking company that has successfully implemented gamification to increase satisfaction of truck drivers. The project concluded that gamification can have a positive impact on worker shortage, though it will not solve the issue. Schiwiek cited other issues as important factors causing the worker shortage, such as low pay, lack of benefits, and regulatory issues. Schiwiek acknowledged the following persons for their help in writing this paper: Tom O'Brien, Biju Kewalram, Jay Lau, Missy Blair, Matt Schrap.

Maria Casares, "The Port and Trucking Sector's Response to Environmental Mandates on the U.S. West Coast."

- This project studied how marine terminal operators (MTOs) and trucking companies have responded to emission regulations in California and suggested predictions for future responses to zero-emission (ZE) mandates and state emissions reduction goals. It also endeavored to determine whether these organizations would be able to accomplish reduction targets on time. In years past, these companies have enjoyed financial support from different programs created by government agencies to replace equipment and redesign operations to facilitate regulatory compliance. The efforts, challenges, and lessons learned in California in pursuing an aggressive emission reduction policies (and the response of MTOs and trucking companies to such policies in the past) are translatable and replicable in other states and countries where ZE regulation may be implemented in the future.

## **Fehr and Peers**

### **Southern California Association of Governments (SCAG) Fehr & Peers: Freight Impact**

**Assessment:** CSULB CITT assisted a team led by Fehr & Peers that is assessing the unique freight impacts within six communities in the SCAG (Southern California) region. During the reporting period, CITT prepared Technical Memos on possible career pathways for students within the impacted communities and on outreach approaches to students and educators. Grant Amount: \$25,000. Period of Performance: 11/2/2021 to 9/30/2022

### **SANDAG WSP Sustainable Freight Implementation Strategy**

CSULB CITT is assisting a team led by WSP developing a Sustainable Freight Strategy for the SANDAG (San Diego) region. CITT continues to assess workforce development opportunities related to sustainable freight within the region. During the reporting period, CITT Executive Director Tom O'Brien contributed to the development and implementation of two focus groups with workforce and industry professionals to solicit information on workforce needs and opportunities.



## OUTREACH

CITT continuously implements effective outreach programs. The Center works year-round to connect with the university, transportation and trade industry, and the surrounding community through newsletters, webinar series, and multimedia products. Outreach includes CITT's signature events – e.g. the annual Town Hall, which is one of the highest profile events in the goods movement industry in the Los Angeles region, several publications like the Center's e-blasts, multimedia products, presentations, sponsorships, and social media campaigns designed to interest and inform the public and related trade/transportation audience.

## SIGNATURE EVENTS

### **CITT's State of the Trade and Transportation Industry Town Hall**

The 2023 CITT Town Hall Meeting, “Decarbonization: Truth, Consequences, and Hard Choices” will be held at The Pointe Conference Center on the campus of CSULB on November 17. California Supply Chain leaders must balance unprecedented decarbonization mandates and American consumer demand for rapid and affordable fulfillment of goods. Striking this delicate balance poses challenges to industry, labor, and government stakeholders. The Town Hall Meeting will consist of a brass tacks talk about the truth, consequences, and hard choices all stakeholders must make to ensure a sustainable and economically secure future. Information regarding this year's Town Hall and past Town Halls hosted by the Center since 1999 can be found [here](#).

### **2024 International Urban Freight (I-NUF) Conference**

Planning for I-NUF 2024 is underway. Details on the event, held every two years, will be included in the next annual report.

### **2023 International Association of Maritime Economists (IAME) Conference**

Together with partners at the METRANS Transportation Consortium, CITT hosted the International Association of Maritime Economists (IAME) conference in Long Beach, California on September 5-8, 2023. IAME is an international association with over 300 individual members from every continent and more than 10 corporate members. The event garnered a large international audience with over 160 maritime professionals joining the conference. More than 130 papers covering a variety of topics including the cruise industry, container terminal optimization, and digitization were presented. The theme for this year's conference was “New Realities in the Global Maritime Economy.” Researchers and industry leaders convened to explore what is next for the maritime economy in an environment of lingering pandemic anxieties, geopolitical conflicts, rapid technological change, and increasing urgency to manage global climate change. The conference inspired participants from around the world to engage in innovative collaborations between academia, government, and industries in response to a rapidly changing world.

## CITT COMMUNICATIONS

### **CITT Center Update**

The previously bi-monthly e-blast has transitioned to a monthly digital newsletter that is distributed on the third Monday of every month to CITT industry and government partners and subscribers. Each newsletter contains in-depth articles covering relevant organizational presentations, project awards, events, and awards. The articles are available online at: <https://www.cpace.csulb.edu/news/citt-news>

### **CITT website**

The CITT website (<https://www.cpace.csulb.edu/center-for-international-trade-and-transportation>) is continually updated to ensure that it is a reliable source of information.

### **METRANS News**

METRANS News is a monthly digital newsletter and serves as the official newsletter of the METRANS Transportation Consortium. It features research, student awards and activities, new program initiatives, and summaries of events. It is distributed to University Transportation Centers, faculty, and industry stakeholders. The monthly issues distributed in 2022-23 are available online at: <https://www.metrans.org/eblasts>. The CITT Research Coordinator serves as the METRANS News editor. Due to turnover and staff shortages during the reporting period, the newsletter has been published less frequently. However, new staff at both the University of Southern California and CSULB will allow for a return to a regular monthly format.

### **METRANS website**

CITT manages the METRANS website (<https://www.metrans.org/>), a central portal for information on METRANS and CITT's programs. All research reports generated by CSULB faculty using METRANS funding are available at [metrans.org](https://www.metrans.org/).

### **CALTAP website**

CITT manages the California Local Technical Assistance Program (CALTAP) website (<https://caltap.org/>). In addition to information on events and funding opportunities, the website also hosts

- A national news/event aggregator for surface transportation professionals
- A library of online video, publications, research, and tech transfer resources
- An "Ask the Expert" feature to connect local agency staff need to the right Caltrans expertise

### **NNTW website**

CITT manages the National Network for the Transportation Workforce (NNTW) website (<https://www.nntw.org/>). In the next annual report, we will discuss the addition of Intelligent Transportation Systems Professional Capacity Building (ITS PCB) materials to the website.

### **SWTWC website**

In addition to the NNTW website, CITT also maintains the Southwest Transportation Workforce Center (SWTWC) website (<https://www.swtwc.org/>). The website contains much of the workforce-focused projects carried out by CITT and information on workforce training resources.

## MULTIMEDIA PRODUCTS DEVELOPED BY CITT

### **Trade Talks**

Trade Talks is a quarterly video series, hosted by Dr. Tom O'Brien, CITT's Executive Director, that examines pertinent issues in the trade sector with perspectives from industry experts. The series is produced by CSULB's Advanced Media Production team and distributed through the CSU network. The series is on hold pending completion of a studio remodel where episodes are taped.

All "Trade Talks" episodes are archived on the Beach TV YouTube channel. Episodes of "Trade Talks" can also be viewed on our webpage: <https://www.cpie.csulb.edu/center-for-international-trade-and-transportation#/news-and-media/media>

### **Annual CITT Town Hall Video Series**

The opening video at each year's CITT Town Hall has become a tradition and highly anticipated feature for returning attendees. The videos are created by CSULB's Advanced Media Production team under guidance by the Executive Director, who determines which key challenges and questions in the goods movement industry to highlight. The 2023 video is forthcoming and the 2022 video can be viewed on YouTube: [CITT - Chasing Elusive Supply Chain Sustainability - YouTube](#)

## SOCIAL MEDIA

CITT's social media accounts continue to gain membership from industry and the community. CITT also manages the communication efforts of METRANS and CALTAP To focus efforts on outreach to our primary audience, CITT almost uniquely posts information on LinkedIn. The social media figures for the organizational accounts are listed below:

- CITT Twitter Followers: 335
- METRANS Twitter Followers: 451
- METRANS LinkedIn Company Page Followers: 361
- CITT LinkedIn Group Page Members (private): 1,194
- CITT LinkedIn Company Page Followers: Total 477

## SPONSORSHIPS

The METRANS Associates Program (MAP) provides the core support for the METRANS Transportation Consortium California at both USC and CSULB. Associates provide annual support at varying levels up to \$50,000. More on the MAP members can be found at [METRANS | METRANS Associates Partners](#).

## PRESENTATIONS/SEMINARS/WORKSHOPS PRESENTED BY CITT

### **Pacific Southwest Region UTC Congress**

The sixth annual Pacific Southwest Region (PSR) Congress took place at the University of Southern California in Los Angeles, CA on March 17 and 18. The title of this year's Congress was Moving Forward: Improving Transportation in USDOT Region 9, and featured concurrent sessions across five themes: Improving Mobility, Mobility & Technology, Improving Resiliency, The Intersection of

Research and Practice, and Carbon & Air Quality. The event included a presentation series designed to quickly highlight research conducted at the eight PSR member universities. GIS and Data Manger Ben Olson presented *Geographic Visualization of Select Global and Domestic Inland Waterways*. Two CSULB students were recognized as 2022 Pacific Southwest Region UTC Students of the Year: James Reuter (M.A., Philosophy) and Calvin Bragg (Global Logistics Specialist from CSULB College of Professional and Continuing Education). More information can be found in the event’s program ([here](#)) and the METTRANS News write-up on the event ([here](#)).

## **Other Presentations**

<b>CITT Team Member</b>	<b>Event</b>	<b>Panel/Session (if applicable)</b>	<b>Hosting Organization</b>	<b>Date</b>	<b>Location</b>
Tom O'Brien	World Conference of Transport Research (WCTR) 2022 Virtual Meeting	Young transport academics' career development	WCTR	25-Jul-22	Zoom
Tom O'Brien	2022 Pharma Logistics Masterclass	Setting your Future Supply Chain Strategy by Economic Modelling	Khalifa University	6-Sep-22	Abu Dhabi, UAE
Tom O'Brien	International Association of Maritime Engineers (IAME) Conference 2022		IAME Conference	14-Sep-22	Busan, Korea
Tom O'Brien	Hosting org's Spring Meeting	US Inland Waterway' Role in a Global Marketplace	American Association of State Highway and Transportation Officials (AASHTO) Council on Water Transportation	21-Sep-22	Online
Tom O'Brien	Inland Rivers, Ports & Terminals (IRPT) 2022 Annual Conference	Waterborne Competitiveness: Comparing U.S. and Foreign Inland Waterways	IRPT	4-Oct-22	Tulsa, OK
Tom O'Brien	Focus on the Future 2022	Freight Forward: Using Technology to Solve Supply Chain Snafus	Self Help Counties Coalition	14-Nov-22	Newport Beach, CA
Tom O'Brien	Fall Conference	Transportation Policy Committee	County Engineers Association of California	16-Nov-22	Anaheim, CA
Tom O'Brien	KYL	Long Beach Qingdao Association (LBQA) Session	Long Beach Qingdao Association (LBQA)	18-Nov-22	Long Beach, CA
Tyler Reeb	Transportation Research Board (TRB) Annual Meeting 2023	How to Find Employees and Keep Them	TRB	10-Jan-23	Washington, DC
Tom O'Brien	Global Logistics Professional (GLP) Course	CITT 200: Intro to World Trade and Containerization	CSULB	18-Jan-23	Long Beach, CA

Tom O'Brien	Futures in Transportation High School Workshop	Sustainable Supply Chains	METRANS Transportation Consortium/University of Southern CA	10-Feb-23	Los Angeles, CA
Tom O'Brien	Fourth Annual National Mobility Summit	PSR UTC Overview	Carnegie Mellon University	16-Mar-23	Washington, D.C.
Tom O'Brien	eTRUC: Workforce Development Advisory Committee (WDAC) Quarterly Meeting	Developing a Sustainable Freight Certificate Program	GRID Alternatives Greater Los Angeles	12-Apr-23	Virtual
Tom O'Brien	CA Delivery Association Event	Top 10 (ish) Trends Shaping the Courier Industry (The Supply Chain View)	California Delivery Association	19-Apr-23	Virtual
Tom O'Brien	Community of Inclusion & Equity Symposium: Equity in Infrastructure	Equity Approaches in Education	Burns McDonnell	9-May-23	Brea, CA
Tom O'Brien	Green Shipping Conference		Simon Fraser University	23-May-23	Vancouver, Canada
Tom O'Brien	Governing Green Shipping Transformation Pathways to Marine Sustainability	Closing Panel: The Paths Ahead: Governance Options for Transforming Ports and Shipping	Simon Fraser University	24-May-23	Vancouver, BC
Tom O'Brien	ITS Canada	Next Generation ITS Workforce	ITS Canada @ St Clair College Centre for the Arts	16-Jun-23	Windsor, ON

## CITT STAFF

The Center for International Trade and Transportation (CITT) is part of the College of Professional and Continuing Education (CPaCE). The overall management of the CITT is the responsibility of the Executive Director. The list below indicates staff who are both presently employed at CITT and those who are no longer at CITT but were employed during the reporting period.

- Thomas O'Brien, Ph.D.**, Executive Director
- \***Tyler Reeb, Ph.D.**, Director of Research and Workforce Development
- \***Marisa Eide**, Assistant to the Executive Director
- \***Scott Jakovich**, Project Manager, Workforce Initiatives
- \***Elizabeth Warren**, Senior Industry Liaison
- \***Ben Olson**, Research and GIS Coordinator
- \***Stacey Park**, Research Associate
- \***Patrick Schiwek**, Program Coordinator
- \***James Reuter**, Research Coordinator

\*Denotes Foundation employee

CSULB STUDENTS ON CITT PAYROLL AS FELLOW, ASSISTANT, OR INTERN

<b>Student Name</b>	<b>Position</b>	<b>Major</b>	<b>Undergrad / Grad</b>
Anh Vu	Research Assistant	Business Administration	Undergraduate
Georgie Suico	Research Assistant	Political Science	Undergraduate
Ramiro Gomez	Research Assistant	GIS	Graduate
Thi Vuong	Research Assistant	Interior Design	Undergraduate
Maria Casares	Research Assistant	MBA	Graduate
Patrick Schiwek	Research Assistant	International Affairs	Graduate
Lan Ca	Research Assistant	Engineering	Undergraduate
Milles Wittig	Research Assistant	Business Economics	Undergraduate
Miti Desai	Research Assistant	Computer Science	Graduate

## CITT POLICY & STEERING COMMITTEE MEMBERS

The Center’s Policy and Steering Committee (PSC) consists of representatives from academia, representatives from modal transportation sectors, units of government, organized labor, and other individuals with distinguished reputations and career accomplishments in international trade and transportation or who are identified as key goods movement stakeholders. The CITT PSC helps guide the Center’s outreach efforts and project activities. Recommendations or concerns from the PSC are implemented throughout the reporting year. Over the past year, the PSC met virtually on the last Tuesday of every month. The constitution of the PSC and all CITT management functions are governed by the CITT bylaws.

### POLICY AND STEERING COMMITTEE MEMBERS

**CITT Executive Director: Tom O’Brien (until November 2023)**

**CITT Interim Executive Director: Tyler Reeb (starting November 2023)**

**Jacki Bacharach**, Executive Director, South Bay Cities Council of Governments

**Marlon Boarnet**, Director, METRANS, Sol Price School of Public Policy, University of Southern California

**Kerry Cartwright**, Director of Goods Movement, Port of Los Angeles

**Anastasios G. Chassiakos**, Ph.D., Professor, Electrical Engineering, College of Engineering, California State University, Long Beach

**Sal DiCostanzo**, Port Representative, Long Beach, Local 13, ILWU

**Rich Dines**, Marine Clerk, ILWU Local 63

**Genevieve Giuliano**, Ph.D., Ferraro Chair in Effective Local Government, Sol Price School of Public Policy, University of Southern California

**Michele Grubbs**, Vice President, Pacific Merchant Shipping Association

**Mark Hirzel**, Assistant Manager Trade Services, American Honda Motor Company

**Gus Hein**, Director, Mid-Pacific Gateway Region  
U.S. Department of Transportation, Maritime Administration

**Trini Jimenez**, Vice President, Public Affairs, Watson Land Company

**Yatman Kwan**, Chief, Office of Sustainable Freight Planning, Caltrans

**Steve Lantz**, Deputy to Metro Board Member, James Butts

**Weston LaBar**, Head of Strategy, Cargomatic

**Alan McCorkle**, CEO, Yusen Terminals, Inc.

**Tom O'Brien**, Associate Dean, College of Professional and Continuing Education, California State University, Long Beach

**Joel Perler**, Economic Development Manager,  
Business Development Division, Port of  
Long Beach

**Matt Schrap**, CEO, Harbor Trucking Association

**Patty Senecal**, Manager, Southern California Region, Western States Petroleum Association

**Chris Swarat**, Dean, College of Professional and Continuing Education, California State University,  
Long Beach

**John Taeleifi**, Chief Executive Officer, Pasifica Financial Corp; West Long Beach Community Advocate

**Karolina Van Bourgondien**, Director of Trade Compliance, LEMAN

**Jan Vogel**, Executive Director, South Bay Workforce Investment Board

**Elizabeth Warren**, President and CEO, Dialed-In Partners

#### **CITT Special Advisor**

**Marianne Gastelum**, Senior Advisor and External Liaison, CITT, California State University, Long Beach

#### **CITT Advisors**

**Ramon Ponce De Leon**, President, Local 13, ILWU

**Joe Gasperov**, President, Marine Clerks Association, Local 63, ILWU



**Monica Gourdine**, Associate Division Administrator, California Division, Federal Highway Administration

**Daniel Miranda**, President, Local 94, ILWU

**C.J. Nord**, C.P.M., Supply Chains for Good

### **In Memoriam**

**Domenick Miretti**, Ph.D., (1932-2016)  
ILWU Senior Liaison, Ports of Long Beach and Los Angeles, Marine Clerks Association

**Connie Rivera**, (1960-2019)  
Government and Community Relations Officer, Alameda Corridor Transportation Authority

## **OTHER CENTER MILESTONES**

In the AY 2022-23, CITT was awarded a three-year grant to be the administrative lead of the California Local Technical Assistance Program (LTAP), which also includes Sacramento State University and UC Berkeley. CSULB will design and pilot curriculum to address the workforce needs of local public agencies statewide in California.

Administrative changes at CITT are outside of the reporting period and will be discussed in greater depth in the next annual report. Tom O'Brien was recently appointed Associate Dean of the College of Professional and Continuing Education, California State University, Long Beach. Tyler Reeb serves as Interim Executive Director of CITT.

## **CURRENT PROFESSIONAL SERVICE AND ORGANIZATIONAL AFFILIATIONS FOR DR. THOMAS O'BRIEN**

- First Vice President, Board of Directors, Harbor Association of Industry and Commerce
- Member, Board of Advisors, Eno Center for Transportation
- Member, Advisory Board, National Transit Institute
- Vice Chair, Transportation Research Board Intermodal Freight Transport Committee
- Member, Transportation Research Board Urban Freight Committee
- Board of Directors, Los Angeles Transportation Club
- Chair, Governmental Affairs and Grants Committee, California Transit Training Consortium
- Past President, Council of University Transportation Centers
- Chair, National Center for Supply Chain Technology Education National Visiting Committee (National Science Foundation)
- Member, Advanced Partnership Action Team, California State University, Long Beach

- Member, Build a Growth Strategy Action Planning Team, California State University, Long Beach
- Member, National Academy of Sciences Study Committee on the Best Practices for the Efficient Supply of Chassis for Transporting Intermodal Containers

## CURRENT PROFESSIONAL SERVICE AND ORGANIZATIONAL AFFILIATIONS FOR DR. TYLER REEB

- Director of Research and Workforce Development, Center for International Trade and Transportation, California State University, Long Beach, California State University, Long Beach (CSULB)
- Associate Director, Federal Highway Administration's Southwest Transportation Workforce Center, CSULB
- Member, METRANS Executive Committee
- Member, Transportation Research Board (TRB) Rural Transportation Issues Coordinating Council
- Member, Transportation Research Board (TRB) Standing Committee on Native American Transportation Issues
- Member of the Transportation Research Board (TRB) Standing Committee on Workforce Development and Organizational Excellence
- Participant, Coro Southern California Inaugural Workforce Leadership Network

## STUDENT AWARDS & RECOGNITION

**Scholarships:** Students associated with CITT programs were awarded \$44,250\* in scholarships for the 2020-2021 academic year from numerous industry associations and organizations:

Several scholarships were awarded by the Port of Long Beach (POLB), LA Transportation Club (LATC), and the Intermodal Association of North America (IANA) for participation in CSULB's Global Logistics Professional (GLP) program and IANA student research:

- POLB Scholarships (\$3750 each)
  - Maria Casares - CSULB student (fall 2022)
  - Sam Russell - CSULB student (fall 2022)
  - Taitu Negus - JB Hunt (spring 2023)
  - Patrick Schiwiek - CSULB student (spring 2023)
- LA Transportation Club (\$4500)
  - Michaëlle Salazar - Customs and Border Protection
- IANA (\$4500 GLP award or \$1825 research award)
  - Maria Casares (Research award, fall 2022)
  - Patrick Schiwiek (Research award, spring 2023)
  - Sam Russell (fall 2022)
  - Brandon Thomas -JB Hunt (spring 2023)

\* All scholarships are reduced by a 6% university-mandated overhead charge.

**Student Awards:**

<b>Title</b>	<b>Recipient</b>	<b>Awarding Organization</b>	<b>Date</b>
US Chamber of Commerce Internship	Anh Vu	US Chamber of Commerce	Summer 2022
2022 Master's Student of the Year	James Reuter	Pacific Southwest Region University Center (PSR-UTC)	Spring 2023
2022 Master's Student of the Year	Calvin Bragg	Pacific Southwest Region University Center (PSR-UTC)	Spring 2023

## FACULTY MEMBERS INVOLVED IN CITT RESEARCH, SCHOLARLY, AND CREATIVE ACTIVITIES

**Undergraduate Research Opportunity Program, CSULB:**

**SCC-PG: Trust, transparency and technology: Building digital equity through a civic digital commons** (research project):

- *Gwen Shaffer*, Associate Professor of Journalism and Public Relations

**Implementing a Community-Based Mobility Lab: Improving Traffic, Protecting Data Privacy** (research project):

- *Gwen Shaffer*, Associate Professor of Journalism and Public Relations
- *Hossein Jula*, Lecturer of Engineering

**Implementing University-Industry Partnership Gateways: Civic Market Blueprints for Innovation in the Trade and Transportation Sector** (research project):

- *Barbara Taylor*, Professor of Biology and Associate Dean for Research of the College of Natural Sciences and Mathematics

**CALTAP Sustainable Engineering Training Academy** (education):

- *Hamid Rahai*, Professor of Mechanical & Aerospace Engineering and Biomedical Engineering and Associate Dean for Research & Graduate Studies of the College of Engineering

## EXTENT OF PARTICIPATION BY INDUSTRY AND NON-GOVERNMENTAL ORGANIZATIONS

- ESRI
- Port of Long Beach (POLB)
- California State Transportation Agency (CalSTA)
- California Governor's Office of Business and Economic Development (GO-Biz)
- California Air Resources Board (CARB)
- Southern California Association of Governments (SCAG)
- California Energy Commission (CEC)
- California Department of Transportation
- California Transit Training Consortium (CTTC)
- National Indian Justice Center (NIJC)
- San Diego Association of Governments (SANDAG)
- Southern California Association of Governments (SCAG)
- LA Metro
- California Department of Transportation (Caltrans)
- 

All GLP and MTOP instructors represent industry leading organizations. The complete GLP roster can be found at <https://www.cpie.csulb.edu/courses/global-logistics-professional#/instructors> and the complete MTOP roster can be found at <https://www.cpie.csulb.edu/courses/marine-terminal-operations-professional#/instructors>

## EXTENT OF STUDENT AND FACULTY PARTICIPATION FROM OTHER CALIFORNIA STATE OR OTHER UNIVERSITIES

CSULB has many partnerships through METRANS, which requires on-going collaboration with students and faculty from institutions in our various consortia. These partnerships are coordinated through the various research initiatives sponsored by METRANS, including:

### **Pacific Southwest Region 9 University Transportation Center (PSR-UTC)**

- Northern Arizona University
- Pima Community College
- University of California, Berkeley
- University of California, Davis
- University of California, Irvine
- University of California, Los Angeles
- University of Hawaii
- University of Nevada, Las Vegas

### **California State University Transportation Consortium (CSUTC)**

- San Jose State University
- California State University, Chico
- California State University, Fresno

#### **National Center for Sustainable Transportation (NCST)**

- The Institute of Transportation Studies at the University of California, Davis (ITS-Davis)
- University of Southern California
- Texas Southern University
- University of California, Riverside
- Georgia Institute of Technology
- University of Vermont

#### **National Network for the Transportation Workforce (NNTW)**

As part of its membership in the SWTWC, CITT is part of a wide network of regional transportation workforce centers funded by the Federal Highway Administration. Each of the centers is dedicated to the development of the transportation workforce as well as certain disciplines unique to each center. The four centers are as follows:

- West Region Transportation Workforce Center (WRTWC) based at Montana State University
- Northeast Transportation Workforce Center (NETWC) based at the University of Vermont
- Southeast Transportation Workforce Center (SETWC) based at University of Memphis
- Southwest Transportation Workforce Center (SWTWC) based at CSULB

## **RESEARCH CONSISTENCY WITH ACADEMIC STANDARDS AND LEGAL CONFORMITY**

CITT's federal funding through the METRANS Transportation Consortium for research includes a requirement that PIs publish in peer-reviewed journals and at academic conferences. Awarding of research funding is dependent upon established success in meeting these goals, or in the case of junior faculty, academic promise and potential.

## **SOURCES AND AMOUNTS OF CITT INCOME**

### **GRANTS, ENDOWMENTS, CONTRACTS AND DONATIONS**

CITT received grants, contracts, and donations for its education, research, and outreach activities totaling \$1,557,380.

CITT continues to manage four endowments established in the College of Professional and International Education for Students in CITT-related credit and non-credit programs. Those endowments are:

- Los Angeles Transportation Club

- Marianne Venieris / Harbor Transportation Club Endowment Scholarship Fund
- Richard Hollingsworth Fund
- Harbor Association for Industry and Commerce Endowment

The LATC endowment disbursed \$4,500 during the reporting period.

- Michelle Salazar was awarded \$4,500 to enroll in GLP.

The Marianne Venieris/HTC Endowment Scholarship held a golf tournament in November 2022.

<b>Fund</b>	<b>Begin</b>	<b>Revenue</b>	<b>Expense</b>	<b>Balance</b>
Hollingsworth Endowed Scholarship	\$48,137.67	\$-	\$-	\$48,137.67
Los Angeles Transportation Club Endowed Award	\$101,136.36	\$-	\$4,500.00	\$96,636.36
Harbor Transportation Club and Marianne Venieris Endowment	\$36,228.34	\$-	\$-	\$36,228.34
Harbor Association of Industry and Commerce Endowment	\$24,832.66	\$-	\$-	\$24,832.66

## SPACE DESCRIPTION AND AMOUNT OCCUPIED

Since July 2016, CITT has been in the CSULB Research Foundation Building, 6300 State University Drive. CITT is now housed in Suite 255. The main office, in Suite 255, is approximately 1,663 square feet that includes 100 square feet of an outside patio and 100 square feet of a storage room and partial kitchen. Suite 255 houses three permanent employees and three student assistants. There is a small area that provides two chairs for visitors. The Suite is currently undergoing a process of reorganization that will be addressed in greater depth in the next annual report.

## ACQUISITION OF EQUIPMENT OR TANGIBLE ASSETS VALUED OVER \$5,000

There are no assets to be reported.

# MINUTES OF CITT POLICY & STEERING COMMITTEE MEETINGS

Minutes for the 11 CITT Policy and Steering Committee Meetings held during the reporting period are as follows:

## Policy and Steering Committee Meeting - Agenda

**Date:** July 26, 2022

**Time:** 8:00am-10:00am

**Location:** CSULB FND Building, 6300 E State University Drive, Suite 310

**Call-in Info:** 1(669)900-6833 Meeting ID: 89091863321#

### Mission

*CITT: Connecting and empowering the trade and transportation workforce.*

### Announcements and Calendar

- HTA – July 27: SoCal Membership Meeting – Shoreline Yacht Club - [Click here to register](#)
- Propeller Club – August 4: A Discussion with Gene Seroka - [Click here to register](#)
- FuturePorts – August 8: August Virtual Members Meeting: Responding to Inflation - [Click here to register](#)
- Propeller Club – August 25: 2022 Harbor Cruise and Scholarship Awards Ceremony - [Click here to register](#)
- HAIC – September 16: Annual Golf Tournament – Skylinks - [Click here to register](#)

### Introductions

- Dr. Christopher Swarat, Dean, CPaCE

### CITT Administrative Updates

- Staff updates
- Endowment updates
  - IANA Scholars
- PSC Membership updates
  - LACBFFA
  - Trucking representative

### METRANS/UTC Updates

- Update on the UTC Competition
  - Pacific Southwest Regional UTC
  - National Center for Sustainable Transportation
  - Tier I Center
- IAME Conference



## **CITT Project Updates**

- LTAP
  - Needs Assessment
  - Western regional meeting
- AGL
- CARB ZEV Workforce
- SCAG and SANDAG Freight Studies
- ITS Capacity Building
- SB 1 Funded projects
  - Talent Pipeline
  - Middle school GIS bootcamp (Rio Hondo)
  
- Caltrans projects
  - Sustainable Freight Academy
  - Low Carbon Transit Operations Program
  - Transit Driver Workforce Study
  - DOT Succession Planning
  - Freight Planning Conference
  
- Tribal programs
  - CEC workforce study
  - Tribal Summit
  - TTAP proposal
- Recently completed reports
  - Inland Waterways - [Click here to access full report](#)
  - Freight and Environmental Policy Case Studies [Freight and Environmental Policy Case Studies & Videos | National Center for Sustainable Transportation \(ucdavis.edu\)](#)
  - Sustainable Freight Academy
- Funding opportunities
  - TTAP
  - AAPA Survey
  - ATRC

## **2023 Programming**

- Town Hall and INUF
  - Scheduling
  - Sponsorship approach

**Next Meeting:** *August 23, 2022 – 8am-9:15am*

**Policy and Steering Committee Meeting Notes  
August 23, 2022**

**Mission**

*CITT: Connecting and empowering the trade and transportation workforce.*

**CITT PSC Members in attendance:** Kerry Cartwright, Trini Jimenez, Sal DiCostanzo, Rich Dines, Patty Senecal, Alan McCorkle, Elizabeth Warren, Steve Lantz, and Michele Grubbs

**CITT Staff in attendance:** Tom O'Brien, Chris Swarat, Dave Kelly, and Tyler Reeb,

**Announcements and Calendar**

- Propeller Club & POLB – August 25: Annual Harbor Cruise and Scholarship Award Ceremony - [Click here to register](#)
- FTA – August 31: Summer Mixer - The Hub, Long Beach - [Click here to register](#)
- IANA – September 12-14: Intermodal Expo 2022 – Long Beach Convention Center - [Click here to register](#) -
- HAIC – September 16: Annual Golf Tournament – Skylinks - [Click here to register](#)
- CSCMP – September 18-21: Edge Supply Chain Conference & Exhibition – Nashville, Tennessee - [Click here to register](#)
- HTA – November 4: First Annual Golf Tournament – Skylinks - [Click here to register](#)
- LTAP – [Please click here to follow us on LinkedIn](#)

**PSC Updates** – Tom introduced the new PSC members to the group.

- Karolina Van Bourgondien, Director, Trade Compliance, LEMAN
- Matt Schrap, CEO, Harbor Trucking Association
- Faculty representative

**Update from Dean Chris Swarat**

**Funding Updates**

- UTC Proposals
  - Pacific Southwest Regional UTC
  - National Center for Sustainable Transportation
  - TALENT (Tier I Center)
- Other Proposals
  - ATRC (UC Davis and Caltrans Division of Local Assistance)
  - Tribal Technical Assistance Program (NIJC and FHWA)
- New Caltrans projects pending start dates
  - National DOT Planning Conference
  - Caltrans Succession Planning
  - Transit workforce study
  - Low Carbon Transport study
  - Data Privacy and ITS

## Events

- IAME Conference (METRANS)
- IANA Expo
- Tribal Transportation Summit
- ITSPCB Workshop
- POLB Harbor Tour (METRANS)
- Pharma Logistics Master Class - [Click here to register](#)
- Inland Rivers, Ports and Terminals & AASHTO
- LTAP Western Region Meeting

## Student Activities

- CII Scholarships
- POLB Scholarships
- CITT Intern
- IANA Scholars
- AGL student coordination

## Research Project Updates

- CARB ZEV Workforce
- SCAG and SANDAG Freight Studies
  - [Click here for more info](#)
- ITS Capacity Building
- SB 1 Funded projects
  - Talent Pipeline
  - Middle school GIS bootcamp (Rio Hondo)
- CEC tribal workforce study
- Summit report update

## 2023 Programming

- Town Hall and INUF
  - Possible dates
  - Sponsorship approach

## Industry Updates

**Next Meeting:** *September 27 – 8am-9:15am*



**CITT Policy and Steering Committee Meeting - Virtual  
September 27, 2022  
Meeting Notes**

**Mission**

*CITT: Connecting and empowering the trade and transportation workforce*

**CITT PSC Members in attendance:** *Sal DiCostanzo, Rich Dines, Marianne Gastelum, Elizabeth Warren, Steve Lantz, Marlon Boarnet, Mark Hirzel, Michele Grubbs, Chris Swarat, Patty Senecal, Monica Gourdine & Roger Wu*

**CITT Staff/Guest in attendance:** *Tom O'Brien, Marisa Eide, Tyler Reeb, and Jen Hong*

Tom O'Brien called the meeting to order.

**Introductions** – Tom and Marlon introduced Jennifer Hong from USC.

**Announcements and Calendar**

- [FTA – October 25: Update on FDA’s Regulatory Landscape and Food Imports - Click here to register](#)
- Propeller Club – October 28: A Discussion with Gene Seroka - [Click here to register](#)
- [Propeller Club – November 2: California - The Fuel Island and Fueling The Supply Chain with Jim Verburg, Director, Fuels - Click here to register](#)
- HTA – November 4: First Annual Golf Tournament – Skylinks - [Click here to register](#)
- Propeller Club – [November 9: A Fireside Chat with Mike DiBernardo and Dr. Noel Hacegaba - Click here to register](#)
- HAIC – [November 17: Fall Mixer - Click here to register](#)
- Long Beach Qingdao Association – November 18: Annual Luncheon - [Click here to register](#)

**Industry/University linkages**

- Update from Dean Chris Swarat – Chris shared his enjoyment of the POLB/Metrans Harbor Tour. He also talked about the importance of campus working on being better about sharing what CITT and its partners represent. He believes that there is a lack of understanding of what CITT is. He would like to hear from all of us about what the university can do to highlight CITT.
- MS in Sustainability Management and Policy capstone projects for industry “clients” - CSULB has a new first cohort that is completing a self-support Master’s degree in sustainability management and policy. It is an interdisciplinary master’s program that is run by the College of Natural Sciences and Math, the College of Liberal Arts, and the College of Business, along with CPaCE. It is designed to prepare professionals who are

going to be taking on sustainability managerial positions. It could be public or private sector for this first cohort of eight students. The students get instruction in economic analysis, cost benefit analysis, policy analysis, and managerial. The students would select their projects this fall where they will develop a problem statement. They are doing this in a cohort basis, so they are going to help each other work on a problem statement and then would do their analysis in the spring with completion in the summer of 2023. They are trained in both quantitative and qualitative skills. Tom asked the group - Is there a problem that any of you have had that has been on the backburner or you don't have staffing to apply it to what relates to sustainability that could become the subject of a project? The idea is that you would be matched with a student. If you have a project, explain what the project is and be available for presentations at the end and to the extent that you want to field questions. Marlon suggested that Tom bring this information to the Metrans Advisory Board, as they may have interest in this.

### **Funding Updates**

- UTC Proposal review timeline - Marlon shared that The University Transportation Center timeline to select the centers within a year of passage of the bill, which would be by November 15th. There was also some speculation that we may not hear the news until January 2023. There were 28 proposals in the country for 10 regional centers. We are a subcontractor to UC Davis as part of the National Center for Sustainable Transportation. There were 30 proposals for what would be five or six national centers. We also collaborate with Pima Community College for a tier one on workforce development.
- Caltrans projects – We have five projects underway that include Succession Planning and National Freight Planning Conference, to name a couple. Tom shared that what is often the case, that there are some pending contract resolution issues. Once those are ironed out, we will be busy.
- New awards
  - ATRC (UC Davis and Caltrans Division of Local Assistance) – We will be using some of the infrastructure that we have developed for LTAP, including needs assessment and tribal outreach to support this ATRC center that Davis is leading.
  - Tribal Technical Assistance Program (NIJC and FHWA) - The TTAP program, at the national level, that FHWA managed on tribal technical assistance for transportation programs, was disbanded and reconfigured as a single center that was designed to serve the entire nation of tribal communities. It's organized on a regional basis and the Western region is going to the National Indian Justice Center, which is one of our key partners and we have a part of the program starting in year two helping them build a workforce development curriculum.

### **Events and Student Engagement**

- IAME Conference (METRANS) – We are hosting this conference in September 2023. We are expecting around 400 attendees from around the world.
- IANA Expo and AGL - The Intermodal Association of North America has its annual Expo in Long Beach in September as well. There has been some discussion about having a bridge event on the weekend after IAME ends and before IANA starts. This year we had about 50 of our AGL students attend the conference on two of the days. Elizabeth

shared the students were engaged and really excited to be there. They even got a chance to speak with Mario Corderro.

- Pharma Logistics Master Class – Tom shared that he traveled to Abu Dhabi to teach as part of a pharma logistics master class. He talked about North American supply chains in general and issues. This is was the 2nd in a series that of master classes that are organized by the University of Antwerp and Pharma, which is an air cargo pharma logistics based Trade Association in Brussels.
- Inland Waterways Presentations – Tom reminded the group about our Inland Waterways competitiveness research project that we did for the Eno Center in DC. People are very interested in this research. Tom presented on it to the American Association of State Highway and Transportation Officials, ASHTO. He is also going to Tulsa next week to present on the project to the Inland Waterways Council.
- Connie Awards - The Container and Intermodal Association Awards - At this year's event, we had four Cal State Long Beach students from the College of Business and the College of Liberal Arts receive awards.

### **Scholarship and Endowment Updates**

- POLB Scholarships - The POLB has identified money for students who are part of CITT programs as well as other programs on campus. This year we are funding students to go through GLP or MTOP. We will also help facilitate interviews for internship opportunities. The hope is that this will get them to the front of the line because they will have had some exposure to logistics and supply chain.
- CITT Intern – New IANA scholar: Patrick Schiwiek is in an international business program. He is originally from Germany.
- IANA Research projects - Patrick and our other IANA intern, Maria, are working on projects looking at the current state of environmental regulation of the of the trade sector in California. Patrick is also going to be starting a project on the use of advanced technology and gamification in training.
- HAIC endowment plans - The Harbor Association of Industry and Commerce, has completed its buildup account for our endowments. We will be dispersing the first of the funds for the first scholarship in spring. HAIC also wants to give students' access to GLP; to fund a student to develop policy and white papers that are of interest to the HAIC membership.
- Eisenhower Fellowship and WTS - The Federal Highway Administration awarded CSULB designation as an Eisenhower fellow local competition center. This means that our students get to take part in a broader program that is national. The Eisenhower Fellowship program is usually targeted to PhD and master students who are undertaking research and minority serving institutions like Cal State Long Beach. There is another category of funding which allows the money to come directly to the campus. Then we have a local competition for only our students. This is open to and encourages undergraduates to build their research skills. We were awarded and are completing the first round of local competitions and these students will get to go to TRB in January. The newest component of this is WTS, Women's Transportation Seminar. Tom shared that they reached out to him about organizing a student chapter on our

campus and we are trying coordinate with the UROP program, which manages the Eisenhower program.

### **Research Project Updates**

- CARB ZEV Workforce - We are continuing to work with CARB on the zero emission workforce paper that we presented. We are leading this with our econ partners, Seiji and Robert, who presented some preliminary findings to our Advisory Board this past month. They are refining it based on the input that they received. That should be completed in December.
- SCAG and SANDAG Freight Studies - Both SCAG and SANDAG have freight impact assessment studies underway. We play a small role in these projects. SCAG's is nearing completion and SANDAG's is just getting started. We are helping them on career pathways and workforce opportunities in the industry.
- ITS Capacity Building – Tom reminded the group that this is a project we're doing for the Federal Highway administration on intelligent transportation systems. Tyler is completing the development of case studies that can be used in Community College and college programs looking at one of which looks at the sort of the intersection of data privacy policy and planning.
- SB 1 Funded projects
  - CEC tribal workforce study - Tyler is also leading a project that we have with the California Energy Commission looking at deployment of alternative fuel buses on tribal communities in the state.
  - Summit report update –The report will be released and we've updated it so that it looks fresher and reflects the bridge between what the summit discussed and the current state of the supply chain.

### **Programming in 2023**

- LTAP Western Regional Meeting (spring 2023) - The new administrative host of the California Local Technical Assistance program will be hosting the Western Regional meeting in the spring of 2023 on our campus. It will be a group of about eight states. One of the pilot classes that we are developing under LTAP is a sustainable construction-engineering program. We will be looking for people to take part in the pilot. It's for people who are undertaking construction projects where compliance with state and federal guidelines impact plans.
- ITS PCB Workshop (spring 2023) - We will be hosting a professional capacity building workshop for intelligent transportation systems for the USDOT. It will focus on Community College partners and how we can build capacity in their programs.
- Tribal Transportation Summit - Tyler is working on the summit with the National Academy of Sciences. It will involve a number of university partners and and the TTAP. The dates are TDB so stay tuned.

### **Industry News and Updates**

- Sal talked about DOE's hydrogen hub competition. He explained that there's a lot of competing proposals in California right now and that Southern California is positioned in an exceptionally good place for the four awards that have close to \$2 billion of funding each.



**Next Meeting:** *November 22, 2022 – 8am-9:30am (Virtual)*



**CITT Policy and Steering Committee Meeting - Virtual  
October 25, 2022  
Meeting Notes**

**Mission**

*CITT: Connecting and empowering the trade and transportation workforce*

**CITT PSC Members in attendance:** *Rich Dines, Elizabeth Warren, Steve Lantz, Marlon Boarnet, Patty Senecal, Karolina Van Bourgondien, Michele Grubbs, John Taeleifi, Monica Gourdine & Roger Wu*

**CITT Staff/Guest in attendance:** *Tom O'Brien and Marisa Eide*

Tom O'Brien called the meeting to order.

**Announcements and Calendar**

- [FTA – October 25: Update on FDA’s Regulatory Landscape and Food Imports](#)
- Propeller Club – October 28: A Discussion with Gene Seroka - [Click here to register](#)
- [Propeller Club – November 2: California - The Fuel Island and Fueling The Supply Chain with Jim Verburg, Director, Fuels - Click here to register](#)
- Propeller Club – [November 9 - A Fireside Chat with Mike DiBernardo and Dr. Noel Hacegaba - Click here to register](#)
- HAIC – [November 17: Fall Mixer - Click here to register](#)

**Administrative Update**

- Staffing updates
  - LTAP Coordinator – We will be looking to fill this position – this person will spend half of their time working on LTAP and the other half doing admin for CITT
  - Finance Manager – Sue Schildt’s last day will be November 29. We are hoping to fill her position sometime in the new year

**Funding Updates and Opportunities**

- UTC Proposal review timeline – Marlon shared that we are hopeful that we will hear the news by November 15. However, there has been some speculation that we will not know until January 2023.
  - PSC Talking Points – We will share our CITT fact sheet as well at LTAP’s
- CSU Transportation Consortium Competition – We have been awarded funding from SB-1 that is led by San Jose State. We have an RFP out on the on the ground for research internal to the campus.
- DOE “Addressing Critical Training Needs for Transportation Decarbonization” with Cerritos College and LB Clean Cities Coalition - There will be another one that is

internal to the entire CSU system and we will be looking to submit a couple of proposals for that. The proposal is going to focus on lithium batteries and focusing on fleet managers, bus, and truck.

### **CITT-Partner Activities**

- Long Beach Qingdao Association – November 18: Annual Luncheon - Long Beach Qingdao Association is having its annual luncheon. This is a regular event that they have that looks at US Chinese partnerships and trade relations. Tom shared that he will be moderating a discussion with Noel from the port of Long Beach and Dan Gardner. The focus is going to be how challenging relations can be these days.
- LA Metro 710 Workshop – November 2 - Metro has been working on a 710 strategy. They are hoping to gather a little bit more information from different communities and groups before the end of this month. They are interested in demonstrating that they are getting input from community areas around campuses and student populations as well.
- EXPO2022 California Innovations: Showcasing Local Agency Solutions – The Caltrans Division of Research Innovation and Systems Information, DRISI is hosting Expo 22, which is showcasing local agency solutions. The event is on November 8th and 9th. In addition to DRISI, the division of local assistance within Caltrans, who are our partners on the LTAP program, is doing this to highlight innovation and local government. LTAP. We will be presenting on local agency innovations that were recognized by a competition that we managed for Caltrans called build a better mousetrap, which is part of a national competition that FHWA runs.

### **Speaking Engagements**

- CUTC Tribal Summit Report - Tyler was in Albuquerque taking part in a university transportation tribal summit, which convened Universities that work with tribal communities, some tribal colleges and tribal reps from around the country.
- Inland Rivers, Ports, and Terminals Presentation – Tom was asked to present on the work that we did with the Eno Center for Transportation on Inland Waterway competitiveness in the US. He wanted to share a report that was done by one of the speakers, Jones Walker. It is a ports and terminals cyber security report. You can find Jones Walker Ports and Terminals Cybersecurity Report here - [please click here](#)

### **Scholarship and Endowment Updates**

- HTA – November 4: First Annual Golf Tournament – Skylinks - November 4th is the first annual golf tournament with HTA. HTA is going to be developing an endowment with CITT
- POLB Scholarships - We are working with students who are being funded by the port of Long Beach and helping them, if possible, secure internships, or at least interview for internships with some of our industry partners

- CITT Intern – Our newest CITT intern, who is working on his Masters in International Business, name is Patrick Schiwiek. He is helping us with our annual report and a number of other projects. He is also working on a research project that looks at applications of gamification and artificial intelligence in logistics and the supply chain.
- IANA Research projects – One of the projects our IANA scholar is working on is looking at the impact of the state's environmental mandates on the trade and transportation sector. The response of industry and anybody who is working along the supply chain.
- HAIC endowment plans - We have completed the buildup account for this endowment. Our first disbursement will be in the spring. We are working on a survey of the membership to identify priorities for policy studies that would be the focus of the students.

### **Research Project Updates**

- ITS Capacity Building - We hope to be starting a new two-year project that is an extension of an existing project with the USDOT Volpe Center. We will be looking at applications of intelligent transportation systems and how they can be deployed in classrooms. Students at all levels should be aware of what intelligent transportation systems are and how they support various aspects of transport. We will be deploying and testing case studies in college classrooms, Community College classrooms and professional development programs. We hope to be in HS as well.
- NCHRP Report 1008: Attracting, Retaining, and Developing the 2030 Transportation Workforce: Design, Construction, and Maintenance - [Click here for full report](#)

### **2023 Programming**

- IAME (Sep. 5-8, 2023) - The International Association of Maritime Economists will be in fall of 2023. We have been in contact with the Hyatt and are waiting for a contract proposal from them. The conference runs three days Wednesday through Friday. This will be a gathering of probably close to 300. Economists from both the public and private sector worldwide, including Europe.
- Town Hall and INUF (fall 2023) – Tom asked the group their thoughts on moving TH back to campus and what our topic should be. He is hoping to have a topic that generates attendance by ILWU. Patty thought that on campus is a good idea and that we can look at the possibility of bussing people in. Rich likes the idea of looking at the BNSF future investment and what is going to happen in the next decade. Patty mentioned freight recession. Tom asked if there is a topic along the lines of the inevitability of the West Coast trade gateway. Patty shared that we could do something called situational analysis the broader economic indicators. We could also discuss how the container rates have fallen and the trucking rates are down. From a situational perspective, how does that factor into all the costly regulations that are hitting January and so forth. She believes we could get some answers from an economist. Tom mentioned that we could invite Seiji and Robert to the next PSC meeting.

**Next Meeting:** *November 22, 2022 – 8am-9:30am (Virtual)*



**Policy and Steering Committee Meeting Notes**  
**November 22, 2022**

**Mission**

*CITT: Connecting and empowering the trade and transportation workforce.*

**CITT PSC Members in attendance:** *Sal DiCostanzo, Rich Dines, Roger Wu, Patty Senecal, Alan McCorkle, Elizabeth Warren, Chris Swarat, Steve Lantz, and Michele Grubbs, Marlon Boarnet, Jan Vogel, Mark Hirzel*

**CITT Staff in attendance:** *Dave Kelly, Marisa Eide, Ben Olson, and Tyler Reeb*

Tyler Reeb called the meeting to order.

**Announcements and Calendar**

- Propeller Club – December 1: State of the Industry, Recap, and What is Ahead for 2023 - [Click here to register](#)
- SCAG – December 1: 13<sup>th</sup> Annual Southern California Economic Summit - [Click here to register](#)
- LATC – December 6: 2022 Year In Review - [Click here to register](#)
- HAIC – December 8: Coffee with the Commissioner - [Click here to register](#)
- HTA – December 14: Holiday Cocktail - [Click here to register](#)
- FTA – December 15: Annual Holiday Luncheon - [Click here to register](#)
- Propeller Club – December 15: Annual Holiday Lunch - [Click here to register](#)

**Administrative Update**

- Sue Schildt Retirement – Tyler announced that Sue is retiring from CITT.

**Funding Updates and Opportunities**

- UTC Proposal review timeline update – Marlon shared that USDOT has put on their web page that they will announce the outcome of the University Transportation Center competition in early 2023. The leads for the Region 9 center are California, Arizona, Nevada, Hawaii Pacific Island territories. We have also submitted a proposal to continue to lead the Region 9 center. We submitted three other proposals as subcontractors and the most impactful would likely be a continuing in our membership in the National Center for Sustainable Transportation. Of the four we've submitted, those are the two that we have a key eye on. We are also a subcontractor to Pima Community College on a submission for workforce development and a subcontractor and a smaller level of level of effort to a Transportation Safety center proposal being headed out of Indiana University, Purdue University at Indianapolis. And so the short answer is that all of that is in their reviewing and we are waiting to hear.
  
- CSU Transportation Consortium Competition – The deadline just expired yesterday. The SB-1 funding that is jointly administered by San Jose State University and California State University, Long Beach with a growing network of other CSU's.

### **Speaking Engagements**

- CUTC Tribal Summit – Tyler talked about his many years worked with the national network of tribes addressing tribal transportation issues, He reported that the Intertribal Transportation Association, which represents large, medium and small tribes all around the country, sent a letter to Secretary Buttigieg in late October, stating that the tribes collectively want tribal consultation when DOT decides to make decisions related to tribal transportation matters. On the heels of that letter, the same organization, along with one other national tribal organization sent in letters supporting a national tribal transportation research event that the National academies is sponsoring Metrans. Tyler, along with several other UTC's, is also sponsoring the effort and is working with leadership at TRB to get all of the cooperative research programs also to sponsor the effort. Esri has agreed to host the event next year, which is also a big deal because they have one of the most state-of-the-art auditoriums I've ever seen. So this is a way we can have a quorum of tribal leaders all come and attend.

### **Scholarship and Endowment Updates**

- HTA – November 4: First Annual Golf Tournament. [Agreement in process. \\$25,000 -](#) We are in the process of locking in a new endowment with the Harbor Trucking Association for \$25,000. Thank you, HTA, for supporting education and Important transportation workforce development efforts.

### **Research Project Updates**

- ITS Capacity Building - We launched the ITS, Intelligent Transportation Systems, talent pipeline. Intelligent Transportation Systems. In the spring we will work with engineering, Hamid Rahai, who is very supportive of the effort, to get a couple of engineering students to participate in an ITS talent pipeline program that will draw upon some its professional capacity building curriculum that we've already developed here at CITT. The students that go through the program will then be guaranteed a paid internship at Gannett Fleming, which is about an \$800 million a year engineering consulting firm that wants to make a pretty aggressive move into ITS. And after we get through the pilot demonstration and have the students go through the pilot, we'll do a full evaluation of this proof of concept and there's a lot of excitement from other ITS stakeholders to grow and scale the effort. The idea with focusing on ITS engineering was to come up with a very targeted proof of concept effort that we could then apply to other transportation modes. The approach could be applied to other disciplines as well.

### **2023 Programming**

- IAME (Sep. 5-8, 2023)
  - Planning Committee report – Planning is underway. We are expecting about 150 attendees.
- Town Hall (fall 2023)
  - Formation of Advisory Subcommittee
- INUF (fall 2024)

### **Industry News and Updates**

**Next Meeting:** No December meeting – 2023 calendar will be sent out soon



## Policy and Steering Committee Meeting Notes January 24, 2023

### Mission

*CITT: Connecting and empowering the trade and transportation workforce.*

**CITT PSC Members in attendance:** *Sal DiCostanzo, Rich Dines, Patty Senecal, Alan McCorkle, Elizabeth Warren, Mark Hirzel, Marlon Boarnet, Steve Lantz, Scott Strelecki, and Michele Grubbs*

**CITT Staff in attendance:** *Tom O'Brien, Marianne Gastelum, Dave Kelly, Marisa Eide, and Tyler Reeb,*

### Announcements and Calendar

- LACBFFA – January 25 - Annual Election 2023 Featuring Customs and Border Protection’s State of the Ports Address: [Click here to register](#)  
Los Angeles Int’l Airport & LA/LB Seaport
- POLB – January 26 – State of the Port: [Click here to watch live](#)
- LATC 2023 Year Outlook – February 7: [Click here to register](#)
  - LATC Endowment Award Presentation
- Propeller Club - February 7 – Webinar: 2022 Look Back & 2023 Predictions with Jon Gold: [Click here to register](#)
- HTA - February 15 –SoCal Membership Meeting: [Click here to register](#)
- HAIC – February 21 – Economic Webinar with William Yu: US-China Economic Outlook: [Click here to register](#)

### Administrative Update

- Program Coordinator Position – Tom gave an update on the PC position. The job has been posted and we are actively looking.

### Research and Funding Updates

- UTC Competition - We are still waiting to hear and may not for a couple months still.
- Supply Chain Success Initiative Report – Please find the link to the report here.
  - [California Supply Chain Success Initiative - A Summary Report - 2022](#)
- Caltrans Project Updates
  - Succession Planning
  - Transit Workforce
  - Low Carbon Transit Operations Program
  - Virtual State DOT Freight Planning Conference

**Appointment** – Tom shared with the group that he will now be taking part on a Chassis Committee with NAS

- National Academies Study Committee Best Practices for the Efficient Supply of Chassis for Transporting Intermodal Containers
  - [Best Practices for the Efficient Supply of Chassis for Transporting Intermodal Containers | National Academies](#)

### **2023 Programming**

- IAME (Sep. 5-8, 2023)
  - Planning Committee report – Planning is underway
- Town Hall (fall 2023) – We will start the planning for this now. We are looking at a Oct/Nov date in 2023.
- INUF (fall 2024) – The plan is to have it in the first two weeks of October 2024. We will start contacting hotels to see who is available.
- Partner Events
  - Green Shipping Workshop, Vancouver BC, May 2023
  - Next Generation Digital Ports, Valparaiso Chile, June 2023
  - VREF Urban Freight Conference, Gothenburg Sweden, October 2023

*Next Meeting: February 28 – Virtual 8am-9:15am*

**Policy and Steering Committee Meeting Notes**  
**February 28, 2023**

**Mission**

*CITT: Connecting and empowering the trade and transportation workforce.*

**CITT PSC Members in attendance:** *Sal DiCostanzo, Rich Dines, Patty Senecal, Alan McCorkle, Elizabeth Warren, Steve Lantz, and Michele Grubbs, Gen Giuliano, Jan Vogel, Mark Hirzel*

**CITT Staff in attendance:** *Dave Kelly, Marisa Eide, Ben Olson and Tyler Reeb,*

Tyler Reeb called the meeting to order.

**Announcements and Calendar**

- HTA – March 1: Zero Emissions Ride & Drive - [Click here for more info](#)
- Propeller Club – March 7: TPM Debrief with Bill Mongelluzzo - [Click here to register](#)
- HTA – March 17: Top Golf Challenge - [Click here to register](#)
- HAIC – March 21: San Pedro Bay Ports Commercial Update - [Click here to register](#)
- VREF – Oct 18-20: 5<sup>th</sup> VREF Conference on Urban Freight – Gothenburg, Sweden

**METRANS Updates**

- METRANS Fact Sheet – Marlon Boarnet
- UTC Funding Update – Marlon Boarnet gave an update that we were funded for another five years.
- IAME – Gen Giuliano shared The IAME the International Association of Maritime Economists is a global association. Much of the membership is outside of the United States and the conference moves around the world each year. We were asked to submit a proposal and to host it for this year so it will take place September 3-5. It will be held in Long Beach with hopes of it being at the Hyatt. We are still negotiating the contract. We will be reaching out to the committee for possible sponsorships and to be on a panel. More to come.

**Research Updates**

- CSU Transportation Consortium – Ben shared that CITT was awarded through the Transports competition. The project is a research need brought to the consortium by the American Road and Transportation Builders Association, or ARTBA. The need is that there are problems hiring and retaining construction workers for infrastructure projects in California and nationally. The project will look at best practices from other industries such as health and tech for attracting and retaining and international workforce, specifically to fill the gap that there is in hiring for construction infrastructure projects. Then we'll go on to validate that approach with employers and employees in the construction sector itself and the final product will be the development of a hiring and retention checklist for the construction industry with key milestones and resources.

- High School GIS Summit (NCST) – Ben also gave an update in the GIS high school summit. It's one of the final projects from the National Center for Sustainable Transportation, UTC funding that we're in the final year of that we're happy to be renewing. One of the one of our final projects for that is we're holding a summit. To culminate the GIS workshops that we did with high school partners that you may have remember report on from a prior meeting. The summit will feature sessions on training for GIS high schoolers. Training on how to bring GIS to the classroom for high school teachers, and discussion on best practices, and from the workshop experience and the research white paper that was done prior to the workshops, as well as getting, you know, which discussion with the teachers on anticipated barriers in sharing available resources with them to bring GIS back to their classroom.
- Research and Development Gateway – The second round of funding that builds on a talent pipeline initiative that we are also rolling out here at California State University, Long Beach. It is an intelligent transportation system engineering talent pipeline and we're currently recruiting engineering students to participate in the pipeline that will culminate with a paid internship at Gannett. Fleming, who is the industry sponsor for the pipeline. It's going to be a proof-of-concept effort that we will hope to scale and expand other critical transportation occupations. We have created a flyer that's going around campus in partnership with the University Research Opportunity Program, Elisa Palacio, Hamid Rahai, who's the research Dean in the College of Engineering, is also a strong supporter, as is Gannett Fleming. The research and Development Gateway idea is something that came out that really was generated around the time I was wrapping up the report with the Mineta Transportation Institute. What we are trying to do is identify other workforce development challenges and resource challenges that the university could take part in? That led to a joint proposal with, with Tyler and Barbara Taylor, who is the research Dean in the College of Natural Sciences and Mathematics. The funding that came through will support tracking of the pipeline. We will have an event later this year to present the success after the students have gone through the paid internship.
- NIJC Update – Tyler shared that Kelly Myers, the Executive Director of NIJC, passed away and that they are ending their contract.

## **2023 Programming**

- Town Hall (fall 2023)
  - Advisory Subcommittee Report
- INUF (fall 2024)
- Partner Events
  - Green Shipping Workshop, Vancouver BC, May 2023

*Next Meeting: March 28 – TBD: 8am-9:15am*

# State of the Center CITT Policy and Steering Committee

March 28, 2023

Tom O'Brien

Executive Director

Center for International Trade & Transportation



**Center for International Trade & Transportation**  
*connecting and empowering the trade and transportation workforce*





## Objectives

- Review Successes
- Outline principal projects for coming year
- Gather input for strategic planning
- ID opportunities for PSC
- ID new PSC members

## Mission Statement and Center Activities

CITT: Connecting and empowering the trade and transportation workforce.

- Education and training for today's realities and tomorrow's opportunities
- Research and policy insights across the global supply chain
- Leadership in the classroom, community, and the workplace

### Research and Policy Initiatives

- Workforce Development--Career Pathway Development for Critical occupations in the trade and transportation sector
- Labor Market Analysis--identifying skills gaps and mapping new competencies required to empower the new mobility workforce
- Policy Analysis--studying the impact of legislation and regulations across the supply chain
- Applied Research--Developing Real-world Test Beds and Pilot Programs to test new initiatives

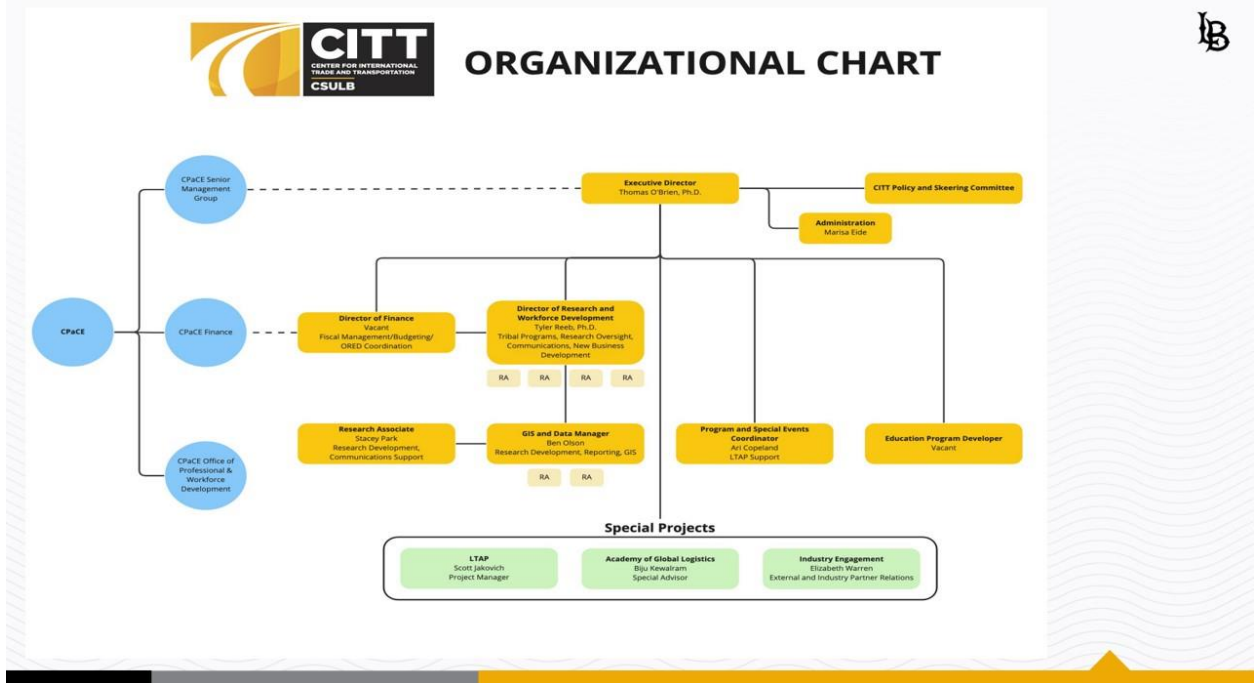
### Education and Training Programs

- Education and Training Programs--a suite of degree and competency-based education and training solutions designed to provide incumbent and emerging professionals with essential industry-recognized knowledge, skills, and abilities
- Customized contract training--educational programs designed to address organizational development and capacity needs for public and private organizations
- Scalable community education seminar programs--targeted outreach programs to promote knowledge transfer about critical supply chain logistics issues for industry, community, and governmental stakeholders
- 21st Century Apprenticeships for industry and organized labor partners
- K-12 and Dual Enrollment programs to create pathways of opportunities
- Build capacity of future (transportation) professionals within the CSULB community



## Community and Industry Engagement

- An evidence-based community and industry resource that connects partners across the supply chain to understand and respond to trade and transportation challenges and opportunities
- Organizational leadership as subject matter experts, speaking engagements, panels
- Civic Markets--Bringing Together Leaders in Industry, Education, and Government to develop common calls to action
- Signature Events: Annual Town Hall, Conferences, Seminars
- Multimedia: Video, Webinars, Podcasts
- Scholarships and Awards, Sponsorships



## 2022 Successes

- Emerging from COVID
- Surviving the end of a grant cycle and project challenges
- Leadership positions
- Administrative
  - Adjusting to long time staff departures
  - Prioritizing new research hires
- Research and Policy
  - CA Supply Chain SUCCESS Initiative
  - Talent Pipelines
  - National leadership in Tribal Transportation and Digital privacy
  - New reports: Inland waterways, Environmental Policy Case Studies, Talent pipelines, Digital privacy, ZEV trucks and buses

## 2022 Successes

- Education and Training
  - GLP
  - LTAP programming
  - Caltrans Sustainable Freight Academy
  - High School GIS Days
  - GIS Middle School Bootcamp
  - AGL Capstone [Port Mentors Meet Students in Long Beach High School Academies - YouTube](#)
- Events and Community Engagement
  - Town Hall
  - INUF
  - Mobility Matters Podcasts
  - Trade Talks series with Port Directors and HAIC
  - New LTAP website and communications



- Partnerships
  - Growth of Endowments and student scholarship support
    - LATC/Venieris-HTC
    - IANA
    - HAIC
    - HTA
    - POLB
  - New contracts with Eno, Fehr & Peers and WSP
  - Internship partnership with Gannett Fleming
  - Expanded partnerships with Rio Hondo CC
  - Internal partnerships with UROP (Eisenhower program) and MSSMP and Academic units



**DISCOVERING THE WORLD THROUGH GIS**

**Session 1:**  
Wednesday, November 3  
7:00 - 8:00 pm  
Online

**Session 2:**  
Wednesday, November 17  
(GIS Day 2021)  
7:00 - 8:00 pm  
Online

GIS is about maps. We know a map has the potential to change the world, inspire action, and serve well-informed decisions. It all starts by creating beautiful, powerful maps that reach others.

But, what makes a good map? How can we engage people with a map?

Turning data into a compelling map is about more than knowing which buttons to push. It's about knowing how to uncover stories hidden in your data. It's about telling those stories clearly, and simply.

Join us to learn all about Geographic Information Systems (GIS) - a key technology now and for the future! In this two session virtual workshop you will start your journey into learning GIS by creating your own StoryMap and more. See the back of this flyer for more information.

Open to youth in grades 7-12 in VT and beyond!  
Limited to 20 participants  
Please register at:  
[www.uvm.edu/extension/youth-announcements](http://www.uvm.edu/extension/youth-announcements)

For required & desirable related accommodations in participating in this program, please contact Lauren Truher at 802-241-6210 or [ltruher@uvm.edu](mailto:ltruher@uvm.edu) by October 15, 2021 so we may assist you.

Logos for UVM Extension, National Center for Sustainable Transportation, and CITT are included.

**CHASING**  
Supply Chain Sustainability  
Balancing Economic Growth, Consumer Demand, and the Environment



Part of  
**LONG BEACH**  
**Academy**  
of Global Logistics

**California Supply Chain SUCCESS Initiative**  
#systemofsystems



**2022 I-NUF**

**9TH METRANS International** Urban Freight Conference  
May 25-27, 2022 | Hyatt Regency Long Beach



## 2023 Commitments



- Research and Policy
  - Highway construction workforce and talent pipelines (SB1) inc surveys
  - ITS capacity building (Volpe) and case study development
  - Community partnered research project on metrics and tools for tribal transportation (PSR UTC)
  - Undergraduate research support
  - New proposals
- Education and Training
  - GLP
  - LTAP courses on GIS, Sustainable Engineering and Freight Management for local communities
  - Revisions to 9<sup>th</sup> and 10<sup>th</sup> grade AGL courses
  - Transportation Planning Professional + (PSR UTC)
  - Sustainable Freight Foundations Certificate (PSR UTC)
  - Sustainable Transit Foundations Certificate (NCST)

## 2023 Commitments



- Events and Community Engagement
  - Western NLTAPA Regional Meeting (April 25-27)
  - IAME 2023 (Sep 5-8)
  - ITS PCB Workshop (Oct 11-12)
  - Town Hall (TBD)
  - Planning for INUF 2024
  - Tribal Transportation Summit

## Left on the table from 2022

- State of Mobility Report
- Data dashboard as signature product for CITT
- Funding for long term study of AGL success
- Apprenticeship program

## What's changed?

- More competitive landscape...
  - COVID makes marketplace national and global
  - More crowded training space for logistics and SCM training
  - Competition for public dollars and private support
    - JFF/IEGO e.g.
- ...But still well positioned
  - WD as policy priority
  - Transportation as bipartisan issue
  - CA role in ZEV policy
  - Demand for development of foundational skills
  - Innovative ways of developing Talent pipelines
  - Leadership in logistics/trucking and tribal WD groups
  - Leadership in National Network for Transportation Workforce
  - Successful UTC cycle

## Strategic Planning Questions

- How can we diversify funding to allow us to focus on projects with greatest impact and cover admin costs?
- How do we build upon unique legacy of Town Hall while keeping it relevant and fresh?
- What makes our programs including GLP valuable to industry?
- How can we best position ourselves to take advantage of WD funding opportunities from State?
- What is role of the PSC? What should it be? Who else needs to be included?
- What keeps you engaged with CITT and what else do you want to see us doing?

Thank You

Tom O'Brien

[tom.obrien@csulb.edu](mailto:tom.obrien@csulb.edu)



**CITT Policy and Steering Committee Meeting - Virtual**  
**May 23, 2023**  
**Meeting Notes**

**Mission**

*CITT: Connecting and empowering the trade and transportation workforce*

**CITT PSC Members in attendance:** *Rich Dines, Roger Wu, Steve Lantz, Sal DiCostanzo, Jan Vogel, Karolina Van Bourgondien, John Taeleifi, Alan McCorkle, Elizabeth Warren, Marlon Boarnet, Patty Senecal, Trini Jimenez, Marianne Gastelum*

**CITT Staff/Guest in attendance:** *Dave Kelly, Marisa Eide, Tyler Reeb, and Angeli Logan*

Tom O'Brien called the meeting to order.

**Announcements and Calendar**

- Future Ports – May 24: 2023 Annual Conference, Strong Ports = Strong California, Supply Chain in Motion – [Click here to register](#)
- HAIC – May 26: Dirtbags Game – Blair Field, Long Beach - [Click here to register](#)
- FTA – May 31: Webinar – Cybersecurity - [Click here to register](#)
- Propeller Club – [June 7](#): LBCT Net Zero and Seven Year Plan with Bonnie Nixon, Director of ESG & Sustainability – Long Beach Container Terminal - [Click here to register](#)
- [POLB – June 7: Celebrating Education, Long Beach Marriott](#) - [Click here to register](#)

**CITT Updates**

- New Hires – Tom gave an update on our Research Assistants who are now hired on as staff:
  - James Reuter, Research Coordinator
  - Patrick Schiwek, Program/LTAP Coordinator
- LTAP Center Update
  - NLTAPA Western Regional meeting – In April we hosted the Western Region local technical and tribal Technical Assistance Program. The purpose of the meeting was to help provide transportation related training or broker that training for local agencies across the state. One of our goals is to help connect the tribal technical assistance program in a region that covers Hawaii, Arizona, Nevada, and California.
  - Sustainable Engineering and GIS For Non-Technician Trainings - We are launching two new training programs that we're developing out of CITT for local agencies. One is a sustainable engineering short course that focuses on construction practices and local government, largely in response to state mandates for off road equipment and a new GIS for non-technician training. The second one is, how do you use GIS technology to better communicate with constituencies and



external partners?

- **Education**

- GLP Summer Cohort – The Cohort will be starting in August instead of July. This year we are combining several of the classes, so the number of contact hours is reduced. We have done research looking at our competitors and the market suggests that there is a demand for a program that's a little bit more truncated. So, we are combining sessions and that's necessitating a change in the capstone as well.
- AGL Capstone launch and course alignment - This is our program and partnership with the POLB and LBUUSD. In the spring, we launched the Capstone project that CITT developed. This is a semester long class for the 12th graders in the program. It's designed around a domestic solar company. It's modeled after the Capstone project that we do at GLP. The difference with this is that the students have opportunities to interact with industry on this part of the process. They'll be doing final presentations on what they have learned. The course is secured approval for transfer credit the CSU these systems. Also, the work that we're doing is aligning with the 9th and 10th grade curriculum so that it feeds more directly into this program. The exciting thing is that when this started in 2016, we had four students transferring out of Cabrillo High School to Cal State Long Beach. This year there are 35 students going to a two-year or four-year institutions and number of those Cal State Long Beach and Long Beach City College.

- **Outreach**

- Green Shipping Conference – Tom shared with the group that he will be speaking at this conference with a focus on global policy arena for green supply chain
- Digital Ports Conference – Tom will attend this PhD. Student conference as a mentor on port related research for an audience of mainly Latin American students.

### **METRANS Updates**

- UTC Kickoff meeting, DC – Marlon gave an update that the Department of Transportation has been conducting kickoff meetings with UTC's. Our meeting was on May 10. The purpose of the meeting was for the DOT leadership to meet team members. We had six universities represented. So, it was a good turnout. The three research areas that we are looking at are accessibility and mobility for all, looking at equity.

## Research Updates

- Talent Pipelines – Tyler and his guest, Barbara Taylor gave an update on the Talent



OSCM

Pipeline research that they are doing. Please find the PowerPoint here: [RandDGateway Slides](#)

## 2023 Town Hall

- Tom reminded that group that we are looking at keeping this event as a morning meeting but that we would like to bring it back to campus. We are trying for the second or third week in October. The topics that were previously discussed when it was more conceptual were the roles of local government in moving freight, particularly in the landscape that we have in Southern California. With the emphasis being on environmental programs, i.e., recent CARB regulations. The second topic that was raised as a possibility was looking at the impact of rail development in Southern California or the role that rail plays in moving freight. The third option was looking at trade through California, reduction in trade volumes, that sort of thing. Tom asked the group who would like to be on the planning subcommittee. Thank you to the following volunteers: Patty Senecal, Sal DiCostanzo, Elizabeth Warren, Roger Wu, and Gus Hein. Marisa will reach out to get the first meeting scheduled.

*Next Meeting: June 27 – Virtual: 8am-9:15am*

**CITT Policy and Steering Committee Meeting Notes - Virtual  
June 27, 2023**

**Mission**

*CITT: Connecting and empowering the trade and transportation workforce*

**CITT PSC Members in attendance:** *Sal DiCostanzo, Rich Dines, Marianne Gastelum, Elizabeth Warren, Steve Lantz, Mark Hirzel, Michele Grubbs, Patty Senecal, Monica Gourdine, Matt Schrap, Kerry Cartwright, Weston LaBar & Roger Wu*

**CITT Staff/Guest in attendance:** *Tom O'Brien, Marisa Eide, Tyler Reeb, James Reuter, and Patrick Schiwiek*

Tom O'Brien called the meeting to order.

**Announcements and Calendar**

- Propeller Club – June 28: PierPASS update with John Cushing - [Click Here to Register](#)
- Propeller Club – July 13: Discussion with Larry Gross, President and Founder of Gross Transportation Consulting - [Click Here to Register](#)
- HAIC – July 18: Legislative Roundtable with Assemblyman Al Muratsuchi - [Click Here to Register](#)
- Propeller Club – July 26: POLB Exec Director Mario Cordero Discusses the Proposed Pier W Wind Farm Terminal - [Click Here to Register](#)

**CITT Updates**

- GLP Anniversary Celebration: August 30, 6:30-9:30
  - Working to eliminate duplicative content, incorporate fresh content
  - Integrated capstone into the general course roll-out so students get exposed to case study from the beginning. Emphasizing group work and presentation, eliminating some written content.
  - Semester long program that competes with more competitive environment and allows graduates to jump into the program for refresher courses
  - Launch of revised program on August 30<sup>th</sup>, featuring graduates and opportunity to kick off new marketing
  - Return to classroom – finding space for flexible scheduling w/ online and taking advantage of proximity to port complex
  - Program is organized into two primary modules CITT-100 and CITT-200
  - Looking for assistance in marketing new program, so will be reaching out to Committee members. Seeking sponsorships for Anniversary.
  - Matt Schrap: Modified course schedule will be more attractive for students. Progress on identifying target audience. Continue to drill down on marketing.
  
- Tom: Over the past decade, we've had fewer large companies send us groups of students. Biju concurred that companies have been investing in their own training

that reflects the culture of their company. Focusing on foundational skills/knowledge in GLP, more modular so can tap into registered training components of apprenticeships.

- Port Decarbonization Listening Session: November 2023, Bay Area
  - APEC tie-in
  - State has entered into MOU with Japanese Ministry of Transportation and Tourism. CalSTA is focused on collaboration and environmental topics and CalSTA has reached out to CITT to organize symposium or hearing to get update on what Ports are doing and facilitate collaboration. Not a done deal yet, but we've been asked to submit a proposal and a budget.
  - MOU is public record and is on the CalSTA website.
  - Matt Schrap: Will the ARB be determining who the appropriate people will be?
  - Tom: We want influence and input and drive the symposium, we do have influence in terms of structure. But this is all TBD.
  - Weston: Hope for a section for concerns and opposing viewpoints, because of the international aspect (mineral mining, etc.). The global perspective on California's environmental efforts – may not be the best for everyone in the world.
  - Sal: Lively debate may not be on everyone's calling card. Don't want to be there just as a token.
  - Kerry: GoBiz released a document addressing this issue, what's needed for the types of materials needed for transportation, domestically-produced products, etc.
  - Weston: ATRI has a comprehensive study on global sensitivities on where these metals need to come from, etc. The volume that would be needed to facilitate this process.
  - Kerry: Domestically-produced computer chips, finished goods, etc. – Would the state want to have those produced in our state? Long-term proposition, of course, but interesting.
  - Matt: Haven't seen that GoBiz report, 20-30 year timeline isn't realistic for trucking industry on a 10 year ZEV timeline.
    - Report link: [https://business.ca.gov/wp-content/uploads/2023/02/CACriticalMaterialsOverview\\_Jan2023.pdf](https://business.ca.gov/wp-content/uploads/2023/02/CACriticalMaterialsOverview_Jan2023.pdf)
  - Tom: Our role would involve gathering speakers. Not just ports, but also broader supply chain topics. MOU begins with ports, however.
  - Sal: Even title might be a red herring. Industry decarbonization rather than port decarbonization.
  - Rich: Zero emission cargo movement outside the basin by short haul rail
- HAIC – Sept 14<sup>th</sup> at CSULB, Hector de la Torre (CARB)
  - Hector has new role, so may be balancing state interest with perspective of the Gateway Cities in mind.
- NAS Chassis Committee Update
  - Study is underway, we've been doing our own fact-finding missions in D.C., Savannah, etc. Upcoming meetings in Chicago and Memphis, report forthcoming in first quarter of 2024.
- AGL Update
  - Industry support for a high school program – high value.

- Capstone pilot – 12<sup>th</sup> graders project for fictional solar company and its supply chain.
- From 4 students pursuing secondary education to 80 students. 30 at LBCC, 21 at four-year institutions. AGL students were awarded \$66,900 in scholarships.
- This coming summer, we will be retooling 9<sup>th</sup> grade courses. Meeting with new principle.
- Elizabeth: Recognition for CITT’s contributions to the program.
- Port Digitization Conference: Valparaiso, Chile
  - Tom to talk about education and partnerships with ports. Serving as mentor.
- Rick Cameron Scholarship
  - Michele: Rick has been great supporter of programs and CITT, and it would be great to do something in his name.
  - Tom: Marisa to schedule call with Pattie and others
  - Matt: We would like to be a part of that conversation
- Revised CITT Fact Sheet
  - Digital, easier for us to update. Gives overview of what CITT does and getting present information out there. StoryMap that will be a much more dynamic dive into the story of CITT, our impacts, images of what we do, etc.
  - In final edits.
- Social Media Push
  - We want to increase engagement on Facebook and especially LinkedIn.
  - LTAP social media campaign in its infancy and the type of training we offer may be of interest to those in industry. Training is subsidized by FHWA and the state.
- Member spotlights
  - Tyler brought to Tom’s attention. Agendize member announcements, projects, etc.
  - Tyler: We have a lot of subject matter experts and allowing them to take the floor could bring in a new energy to our discussions. Give Tom and Tyler an opportunity to listen in as members of the committee, and hear more formally about what others are up to.
  - If anyone would want to be one of our first groups, please reach out.
- MHFA Training
  - We were able to take advantage of grant funding to do a Mental Health First Aid Training program.
  - If anyone is interested in being connected to this program, we would be happy to help.

### **METRANS Updates**

- UTC Launch Update
  - Funding that we need to launch events (ex: IAME) is here so we can begin planning in earnest.
- Stay tuned for IAME information.

## Research Updates

- Huge number of things in the pipeline now that funding is secured.
- R&D Gateway
  - Tyler: Committee survey participation is valued, closing in our target goals for respondents and then moving onto focus groups. First is addressing industry groups looking into barriers facing industry investment/involvement w/ university, other two concern campus and campus leadership.
- NSF Grant
  - w/ Dr. Gwen Shaffer. ITS technologies present digital rights concerns.
- Transit Operator Survey (Caltrans)
  - Without survey, worker safety is already clearly a concern.

## Town Hall

- Subcommittee formed, meeting this afternoon
- Marisa to reach out to David Kelly, include him in the discussion.
- Because we are recovering from extended planning period, we are doing an event on campus for Town Hall.
- Marisa: Has identified possible venues on campus, waiting to hear from contacts. The Pointe allows for theater or banquet style.
- Tom: Bringing it back on campus reduces expenses quite a lot. Higher attendance off-campus, but we can work on managing that.
- Tom: Seeking ideas from this committee for subcommittee to consider
- Tyler: Might be better to have more specific audience, more hard-hitting.

## Additional Comments

- Rich: Inland Ports are coming
- Sal: May not be appropriate since I'm on subcommittee, but to break the ice: I'm looking to find a balance... Decarbonizing freight may be important but ought not be sole focus. We ought to even burden across society. We want to reach local audience and we have the Center here because of proximity to Port, but getting the message out (as Tom/Tyler said) is necessary for environment efforts to succeed.
- Rich: National freight policy has been a discussion for very long time – Has grown tiresome. When you talk about environmental justice, those groups don't understand ports. We are the ones who know how to get this done, we have to start here. We don't have enough discussion about who can get this done: regulatory agencies and environmental justice groups don't know how. If we could discuss with them, that would be good but that's not the world we live in. Sal and I will lose our jobs if we don't do this right – Our ports are that important. Inland ports are coming: Why are they coming? Can everyone win with this? Yes.
- Tyler: One thing that I think we should do at some point is look at technological solutions that could be great unifiers. Transparency enabled by blockchain (not cryptocurrencies) could help with equitable sharing of information. Next Town Hall not time/place for this, but should be on our radar.
- Rich: we should move 75% of containers by on dock rail to inland ports (outside of our air basin) and then distributed from the hubs by heavy duty trucks

- Steve: A balance between business economics and decarbonization. What is the model that works?
- Willow Springs Park – meeting for Rick. Rich will email to Marisa.

*Next Meeting: Virtual - July 25, 8am-9:15am*