

EMSB - Educational Services

High School Challenge Week 2

#stayathome



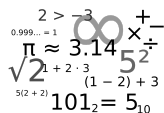
April 6, 2020



[ELA](#)



[Français](#)



[Math](#)



[Phys. Ed](#)



[Science & Technology](#)



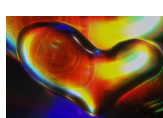
[Social Sciences](#)



[History IV](#)



[ERC](#)



[Arts](#)



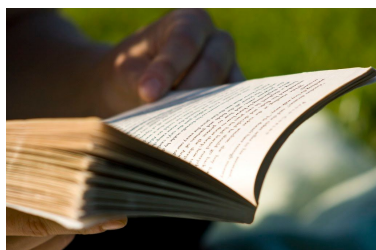
[Career Exploration](#)



[E.P.I.C. Challenge](#)



[Digital Citizenship](#)



English Language Arts

You Be The Judge!

[EMSB Short Film Festival](#)



Français

Douter ou faire confiance ?

Pouvez-vous détecter les fausses informations que l'on vous partage sur Internet? [Faites-le test!](#)

Vos vêtements sont-ils intelligents?

Pour le découvrir, visionnez le documentaire suivant: [Des vêtements intelligents](#)

$$\begin{array}{c}
 2 > -3 \\
 0.999\dots = 1 \\
 \pi \approx 3.14 \\
 \sqrt{2} \\
 1 + 2 \cdot 3 \\
 5^2 \\
 (1 - 2) + 3 \\
 5^{(2+2)} \\
 101_2 = 5_{10}
 \end{array}$$

Math

Take the challenge!

The [problem of the week](#) and the answer keys for all levels are designed to provide students with an ongoing opportunity to solve mathematical problems.

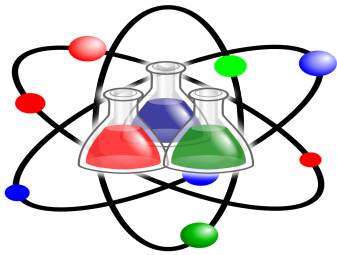
A good problem forces students to consider the problem, make choices about what mathematical knowledge is needed to solve the problem, carry out the necessary steps, and then explain why their answer makes sense.



Physical Education and Health

Healthy and Active... Online!

[Heath & Digital Citizenship Challenge](#)



Science & Technology

Bad Science or Not?

As scientists we are taught to think critically and come up with a reasoned judgement based on evidence.

Put your science caps on while you work through [the question of the week](#), "Will you always say "wow" when you use the shamwow?"

Traduction française

Mauvaise science ou pas?

En tant que scientifiques, on nous apprend à réfléchir de manière critique et à porter un jugement raisonné basé sur des preuves.

Mettez vos casquettes scientifiques pendant que vous travaillez sur [la question de la semaine](#) : "Allez-vous toujours dire "wow" quand vous utilisez le shamwow ?



Social Sciences

Contemporary World: Fake News

Check out these news stories and decide whether they are true or false. You can either just observe the stories and decide, or use the internet to help you do some detective work.

[Article 1](#)

[Article 2](#)

Click [here](#) to see which of the stories is true, and which one is fake news!

(This activity was based on information from the University of Akron)



History/Histoire IV

History repeats itself...

The COVID-19 pandemic gives you a chance to live history in the making. But you're not the first generation to live through something like a pandemic or an epidemic.

Here's a short [activity](#) you can do to help understand the health conditions in Quebec during the first phase of industrialization.

L'histoire se répète...

La pandémie COVID-19 vous donne une chance de faire partie l'histoire. Mais vous n'êtes pas la première génération à vivre une pandémie ou une épidémie.

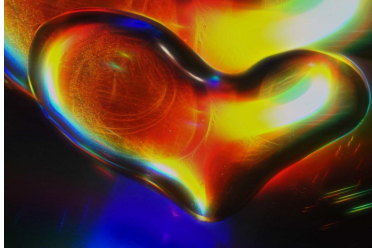
Voici une brève [activité](#) pour vous aider à comprendre les conditions de santé au Québec lors de la première phase d'industrialisation.



Ethics and Religious Culture

Having an Impact Online

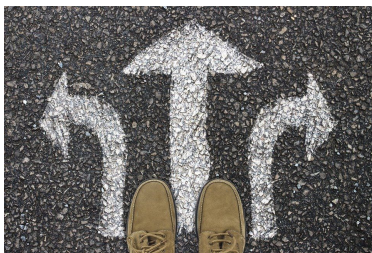
Staying at home means spending lots of time online. Take this [quiz](#) to see if you know how to react when witnessing cyberbullying.



Arts Education

Life Imitating Art

Using the materials and people in your house, recreate a piece of art or a photo. Take a look at this [article](#) from a few years ago for examples, along with the challenge that was recently issued by the [Getty Museum](#). Try to see how many art works that you can recreate!



Career Exploration

Research is key!

Whether you are researching a potential career or something that interests you, it is important to exercise critical thinking.

This week take a moment to choose a social issue that interests you and research it online. However, instead of simply stopping at a Wikipedia article or news story, seek out their sources and read them too. You may be surprised by what you learn! This [worksheet](#) can be used to map out your research and final conclusion.



E.P.I.C Challenge

Educational Personal Innovative Challenge

Design Thinking- Think, Create and Make

Having spent more time at home and in the kitchen, is there an accessory, which would be more purposeful? Invent, design or redesign this object by building it with paper, cardboard or in [Tinkercad](#), a 3D web-based application.

If you decide to use Tinkercad, you'll need to sign up with an account. Before you give all your information, think about what you're sharing. You don't want everyone to have all of your personal information if it's not necessary.



Digital Citizenship

[Digital Media and Your Brain](#)