

## Metro Vancouver on Transit



### Parks & Nature

- Capilano Suspension Bridge:** Take the SeaBus from Waterfront Station to Lonsdale Quay and transfer to #236 Grouse Mountain bus to 3735 Capilano Rd.
- Dr. Sun Yat-Sen Classical Chinese Garden:** Take Expo Line SkyTrain to Stadium-Chinatown Station. Use station exit to Keefer Pl., right of the Lost and Found Office. 5 min walk to 578 Carrall St.
- Grouse Mountain:** Take the SeaBus from Waterfront Station to Lonsdale Quay and transfer to #236 Grouse Mountain bus to Grouse Mountain.
- Kitsilano Beach:** Take the #2 Macdonald bus westbound to Cornwall Avenue and Yew Street.
- Lynn Canyon Park Suspension Bridge:** Take the #210 Upper Lynn Valley bus eastbound to Phibbs Exchange, transfer to #227 Lynn Valley Centre bus at Bay 7. Take to Duval Rd. stop. 2 min walk east on Peters Rd.
- Nitobe Japanese Garden/UBC Botanical Gardens:** Take the Canada Line to Broadway-City Hall Station, transfer to the 99 B-Line towards UBC bus exchange. 11 min walk, or transfer to 68 Lower Mall.
- Queen Elizabeth Park:** Take the Canada Line south to King Edward Station and walk 4 short blocks to Queen Elizabeth Park.
- Stanley Park (Vancouver Aquarium):** Take the #19 Stanley Park bus northbound to the bus exchange in the park. 2 min walk to Aquarium.
- VanDusen Botanical Gardens:** Take the #17 Oak bus southbound to 37th Ave. stop. 1 min walk to 5251 Oak St.



### Entertainment

- Queen Elizabeth Theatre/The Playhouse:** Take the Expo Line SkyTrain to Stadium-Chinatown Station. 4 min walk north to 650 Hamilton St.
- Stanley Industrial Alliance Stage:** Take the #10 Granville bus southbound to 11th Ave. bus stop. 2 min walk to 2750 Granville St.
- Theatre Sports/Improv/Arts Club Theatre Granville Island:** Take the #50 False Creek bus southbound to Granville Island. 5 min walk north.



### Museums & Attractions

- BC Sports Hall of Fame & Museum/BC Place:** Take the Expo Line SkyTrain to Stadium-Chinatown Station. 2 min walk to Gate A of BC Place Stadium.
- FlyOver Canada at Canada Place:** 4 min walk west of Waterfront Station to 201 – 999 Canada Place.
- Granville Island:** Take the #50 False Creek bus southbound to Granville Island. 5 min walk north.
- New Westminster River Market:** Take the Expo Line SkyTrain to New Westminster Station. 2 min walk to Front St. overpass walkway to River Market.
- Pacific National Exhibition (PNE)/Playland/Pacific Coliseum:** Take the #95 SFU bus eastbound, or the #14 Hastings bus northbound/eastbound to Renfrew St. stop, 2 min walk to entrance.
- Pacific Space Centre, Vancouver Museum, Vancouver Maritime Museum:** Take the #2 Macdonald bus eastbound to Cypress St. stop. 5 min walk north to Ogden Ave.
- Science World:** Take the Expo Line SkyTrain to Main Street-Science World Station, 2 min walk.
- UBC Museum of Anthropology:** Take the Canada Line to Broadway-City Hall Station, transfer to the 99 B-Line towards UBC bus exchange. 11 min walk, or transfer to the 68 Lower Mall.
- Vancouver Art Gallery:** Centrally located downtown, the gallery is a 3 min walk from either Granville or Vancouver City Centre Stations to 750 Hornby St.



### Shopping

- McArthurGlen Outlet Centre:** From Waterfront Station take Canada Line-YVR to Templeton Station.
- Metrotown Centre:** Take the Expo Line SkyTrain to Metrotown Station.
- Pacific Centre:** Centrally located downtown, this shopping centre has access to both the Expo Line Granville Station and the Canada Line Vancouver City Centre Station.

## Downtown Vancouver



### Legend

- Waterfront Station
- Airport and BC Ferries
- Parks & Nature
- Entertainment
- Museums & Attractions
- Shopping
- Great Neighbourhoods to Explore

### Skytrain

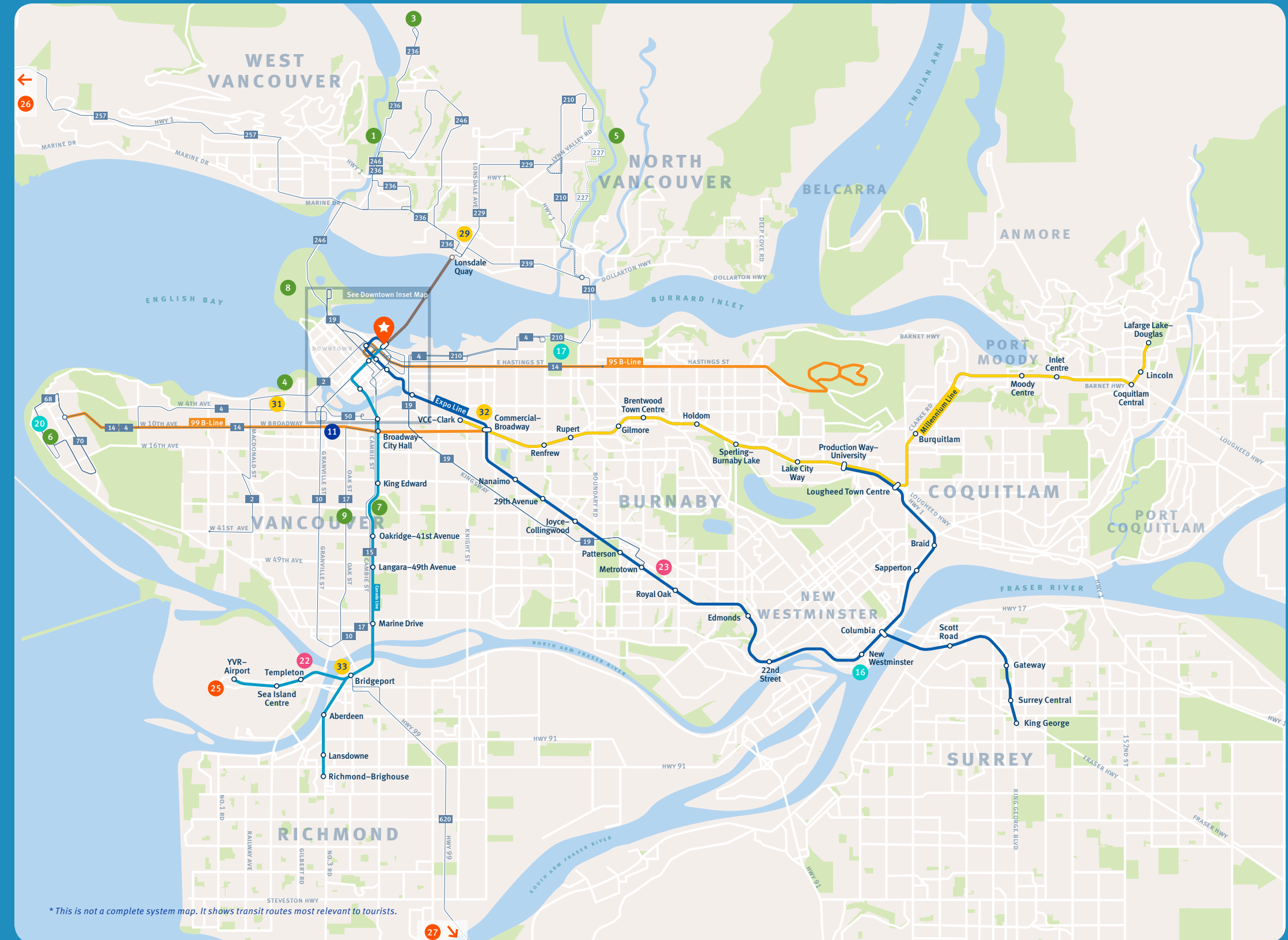
- Canada Line
- Expo Line
- Millennium Line

### Passenger Ferry

- SeaBus

### Bus

- B-Line Routes
- Regular Bus Service
- Limited Bus Service



\* This is not a complete system map. It shows transit routes most relevant to tourists.

## How often will you use transit during your stay?

### Occasionally?

Buy a one-time Compass Ticket.

*Valid on date of purchase only.*

### Single-use Ticket

- Unlimited transfers for 90 minutes from tap-in on any mode of transit (except West Coast Express).

or

### Tap to Pay

- Skip the line at the Compass Vending Machine.
- Ride everywhere with your contactless Visa®, Mastercard® credit card, or mobile wallet to pay the adult cash fare.

or

### DayPass Ticket

- Unlimited trips on the date you purchase, until the end of our service day.
- Saves money if you use transit multiple times in one day.

### Frequently?

Buy a re-loadable Compass Card.

*\$6 refundable deposit required.*

### Stored Value

- Load your card with \$5 or more.
- The system automatically deducts the correct fare for each trip.

or

### DayPass

- Load your card with a DayPass for unlimited same-day trips.
- Saves money if you use transit multiple times in one day.

Questions? Please visit [translink.ca](http://translink.ca) or phone 604.953.3333

## Frequently Asked Questions

### 💰 How is my fare determined?

- On SkyTrain, Canada Line and SeaBus, fares are based on:
  - Number of zones you travel through.
  - Time of day. On weekends, holidays and after 6:30pm on weekdays all modes of travel are charged as one-zone.
- Bus travel is charged as one-zone, regardless of distance.

### 🕒 How long is my fare valid for?

- Single-use tickets and Stored Value fares give you unlimited transfers for 90 minutes from the time you tap-in.
- DayPass tickets are good on the day of purchase until the end of our service day.

### 📉 Are there discount fares for youth, seniors or children?

Yes. Discounted Concession fares apply to seniors age 65+, youth age 14 to 18 (with photo ID) and to children age 5 to 13. Children under age 5 ride free with an adult (max. 4 children per adult).

Note: Concession Compass cards for children, youth and seniors are only available in stores. For the list of locations, visit [translink.ca/wheretobuy](http://translink.ca/wheretobuy).

### 🚲 Can bikes be taken on transit?

Yes. Bikes can be taken almost everywhere on transit, including the bus, SkyTrain, SeaBus and West Coast Express. Some restrictions apply. For more details, visit [translink.ca/bikesontransit](http://translink.ca/bikesontransit).

### ♿ Accessibility?

Yes. Bus, SkyTrain, SeaBus, and West Coast Express are fully accessible to people with disabilities. Most TransLink bus services are also accessible.

### Have Questions?

Please visit [translink.ca](http://translink.ca) or phone 604.953.3333. Compass Information 604.398.2042.

## Airport and BC Ferries



### 25 Going to Vancouver International Airport (YVR)

The Canada Line provides direct access from Downtown Vancouver to YVR Airport. A trip from Downtown Vancouver to YVR Airport takes only 25 minutes. Canada Line train cars are designed to accommodate luggage.

Skip the line at the airport and check-in for your flight at select Canada Line stations. Check-in kiosks are available at YVR–Airport, Templeton, Bridgeport, Marine Drive, Broadway–City Hall, Olympic Village, Vancouver City Centre and Richmond–Brighouse stations.

### 26 Going to Horseshoe Bay Ferry Terminal

Bus route 257 Express Horseshoe Bay connects Downtown Vancouver to the Horseshoe Bay Ferry Terminal in West Vancouver. Taking transit to Horseshoe Bay Ferry Terminal from Downtown Vancouver takes approximately 45 minutes.

### 27 Going to Tsawwassen Ferry Terminal

Take the Canada Line from Downtown Vancouver to Bridgeport Station. Outside the station entrance you can connect to bus route 620 Tsawwassen Ferry. This bus takes you right to the entrance of Tsawwassen Ferry Terminal. Taking transit to Tsawwassen Ferry Terminal from Downtown Vancouver takes approximately 1 hour 40 minutes.

### Plan Your Route

Receive detailed route, fare and schedule information by simply following the instructions on our online Trip Planner tool [translink.ca/tripplanner](http://translink.ca/tripplanner), or call 604.953.3333.

## Great Neighbourhoods to Explore

These unique areas are easy to explore by taking transit, walking or cycling.



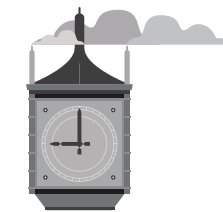
### 28 Chinatown

Few neighbourhoods in Vancouver embody the city's history and diversity like Chinatown. Located on the east side of Downtown Vancouver, a few blocks south of Gastown. This vibrant, bustling district is North America's third largest Chinatown. You'll find a great mix of traditional shops and food, along with new trendy bars and restaurants. Take the Expo Line SkyTrain eastbound to Stadium–Chinatown Station.



### 29 Lower Lonsdale

Take the SeaBus from Waterfront Station to North Vancouver. Visit the Lonsdale Quay Market and explore the Lower Lonsdale neighbourhood. There you can watch shipbuilding and working tugboats. You can shop at boutiques and specialty food stores. Tour local galleries and eat at a great selection of restaurants.



### 30 Gastown

Gastown is one of the oldest neighbourhoods in Vancouver. The cobblestone streets, steam clock and architecture make you feel like you stepped back in time. While the art galleries, trendy shops, hip eateries and pubs bring this area to life. 4 min walk east of Waterfront Station.



### 31 Kitsilano

"Kits" as locals call it, is located over the Burrard Bridge from Downtown Vancouver. This neighbourhood has great beaches and parks to explore. Located beside Vanier Park is the Vancouver Museum, Maritime Museum and Pacific Science Centre. Along West 4th Avenue and West Broadway, you'll discover unique shops and great local eateries. Take either the #2 Macdonald bus, the #4 UBC bus, or the #14 UBC bus to Kitsilano.



### 32 Commercial Drive

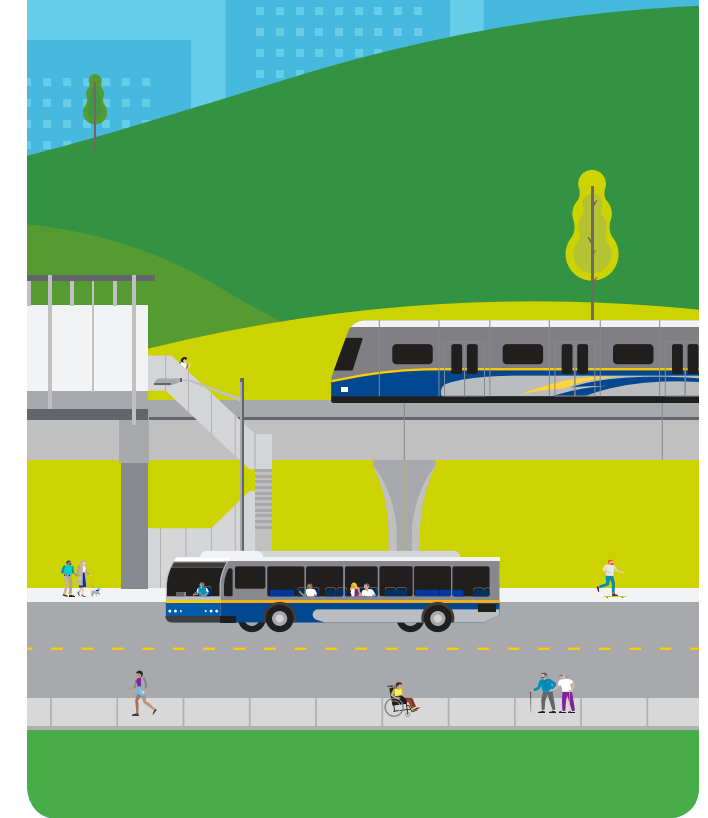
Commercial Drive is home to an exciting mix of independent cafes, restaurants and boutiques. "The Drive" is arguably the most diverse and colourful neighbourhood in Vancouver. At the south end of the neighbourhood is John Hendry Park, which surrounds Trout Lake. On Saturdays from May through to October, the park is home to an excellent farmer's market. Take the Expo Line SkyTrain eastbound to Broadway–Commercial Station.



### 33 Golden Village

This Richmond neighbourhood is a great spot for entertainment, food and shopping. Take the Canada Line to Bridgeport Station. The River Rock Casino and Richmond Night Market are located right beside the station. Go one stop further to Aberdeen Station. Shop at Aberdeen Mall, or dine on a wide selection of Asian cuisine restaurants.

## Getting Around Metro Vancouver on Transit



## Welcome to Metro Vancouver!

We want to help you explore our beautiful region by transit.

This map contains suggestions on a wide variety of places to visit and how to get there by transit.